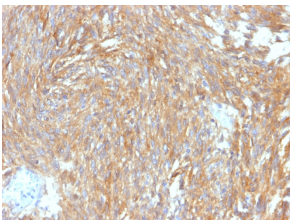


Anti-TMEM16A Antibody [DG1/2564R] - BSA and Azide free (A252882)

Specifications:

Name:	Anti-TMEM16A Antibody [DG1/2564R] - BSA and Azide free
Description:	Recombinant rabbit monoclonal [DG1/2564R] antibody to TMEM16A.
Applications:	IHC-P
Recommended Dilutions:	IHC-P: 1-2 µg/ml
Reactivity:	Human
Immunogen:	Recombinant fragment, within amino acids 2-101, of human DOG-1 protein. The exact sequence is proprietary.
Host:	Rabbit
Clonality:	Monoclonal
Clone ID:	DG1/2564R
Isotype:	IgG
Conjugate:	Unconjugated
Purification:	Protein A/G chromatography.
Concentration:	1 mg/ml
Product Form:	Liquid
Formulation:	Supplied in 10mM Phosphate Buffered Saline; without Sodium Azide and carrier free.
Storage:	Shipped at 4°C. Upon delivery aliquot and store at -20°C. Avoid freeze / thaw cycles.
General Notes:	This monoclonal antibody is also available in a different formulation with BSA and Sodium Azide - Anti-TMEM16A Antibody [DG1/2564R] (A249702).
Disclaimer:	This product is for research use only. It is not intended for diagnostic or therapeutic use.

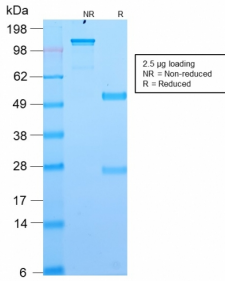
Images:



Immunohistochemical analysis of formalin-fixed, paraffin-embedded human GIST using Anti-TMEM16A Antibody [DG1/2564R].

Anti-TMEM16A Antibody [DG1/2564R] - BSA and Azide free (A252882)

Images continued:



SDS-PAGE analysis of Anti-TMEM16A Antibody [DG1/2564R] under non-reduced and reduced conditions; showing intact IgG and intact heavy and light chains, respectively. SDS-PAGE analysis confirms the integrity and purity of the antibody.