

Anti-beta 2 Microglobulin Antibody [B2M/1857R] - BSA and Azide free (A252934)

Specifications:

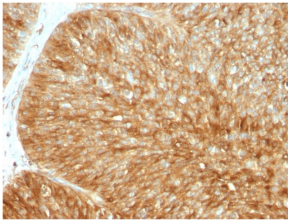
Name:	Anti-beta 2 Microglobulin Antibody [B2M/1857R] - BSA and Azide free
Description:	Recombinant rabbit monoclonal [B2M/1857R] antibody to beta 2 Microglobulin.
Specificity:	This antibody recognizes a protein of 12kDa, identified as beta-2 microglobulin. Major histocompatibility complex (MHC) class 1 molecules bind to antigens for presentation on the surface of cells. The proteasome is responsible for producing these antigens from the components of foreign pathogens. MHC class 1 molecules consist of an alphaheavy chain that contains three subdomains (alpha1, alpha2, alpha3) and a non-covalent associating light chain, known as beta-2-Microglobulin. Beta-2-Microglobulin associates with the alpha3 subdomain of the alphaheavy chain and forms an immunoglobulin domain-like structure that mediates proper folding and expression of MHC class 1 molecules. The alpha1 and alpha2 domains of the alphaheavy chain form the peptide antigen-binding cleft. Mutations in the beta-2-Microglobulin gene can enhance the progression of malignant melanoma phenotypes.
Applications:	ELISA, Flow Cytometry, WB
Recommended Dilutions:	Flow Cytometry: 1-2 µg/million cells, WB: 1-2 µg/ml, IHC: 1-2 µg/ml
Reactivity:	Human, Non-Human Primates
Immunogen:	Recombinant full-length human B2M protein.
Host:	Rabbit
Clonality:	Monoclonal
Clone ID:	B2M/1857R
Isotype:	IgG
Conjugate:	Unconjugated
Purification:	Protein A chromatography.
Concentration:	1 mg/ml
Product Form:	Liquid
Formulation:	Supplied in 10mM Phosphate Buffered Saline; without Sodium Azide and carrier free.
Storage:	Shipped at 4°C. Upon delivery aliquot and store at -20°C. Avoid freeze / thaw cycles.
General Notes:	This monoclonal antibody is also available in a different formulation with BSA and Sodium Azide - Anti-beta 2 Microglobulin Antibody [B2M/1857R] (A249754).

Anti-beta 2 Microglobulin Antibody [B2M/1857R] - BSA and Azide free (A252934)

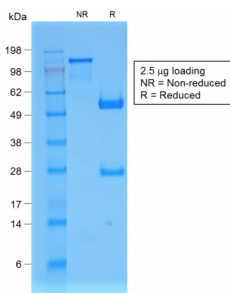
Specifications continued:

Disclaimer: This product is for research use only. It is not intended for diagnostic or therapeutic use.

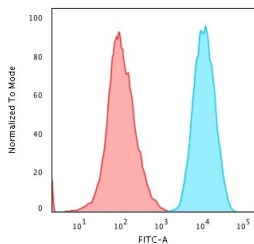
Images:



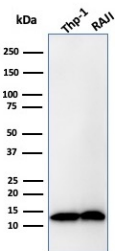
Immunohistochemical analysis of formalin-fixed, paraffin-embedded human bladder carcinoma using Anti-beta 2 Microglobulin Antibody [B2M/1857R].



SDS-PAGE analysis of Anti-beta 2 Microglobulin Antibody [B2M/1857R] under non-reduced and reduced conditions; showing intact IgG and intact heavy and light chains, respectively. SDS-PAGE analysis confirms the integrity and purity of the antibody.



Flow cytometric analysis of human HeLa cells using Anti-beta 2 Microglobulin Antibody [B2M/1857R] followed by Goat Anti-Mouse IgG (CF® 488) (Blue). Isotype Control (Red).



Western blot analysis of THP-1 and Raji Cell lysates using Anti-beta 2 Microglobulin Antibody [B2M/1857R].