

## Anti-Bcl-2 Antibody [100/D5 + 124] - BSA and Azide free (A253049)

### Specifications:

Name:	Anti-Bcl-2 Antibody [100/D5 + 124] - BSA and Azide free
Description:	Mouse monoclonal [100/D5 + 124] antibody to Bcl-2.
Specificity:	This antibody recognizes a protein of 25-26kDa, identified as the bcl-2 lpha oncoprotein. It shows no cross-reaction with Bcl-x or Bax protein. Expression of bcl-2 lpha oncoprotein inhibits the programmed cell death (apoptosis). In most follicular lymphomas, neoplastic germinal centers express high levels of bcl-2 lpha protein, whereas the normal or hyperplastic germinal centers are negative. Consequently, this antibody is valuable when distinguishing between reactive and neoplastic follicular proliferation in lymph node biopsies. It may also be used in distinguishing between those follicular lymphomas that express bcl-2 protein and the small number in which the neoplastic cells are bcl-2 negative.
Applications:	Flow Cytometry, IF, WB, IHC-P
Recommended Dilutions:	Flow Cytometry: 1-2 µg/million cells, IF: 1-2 µg/ml, WB: 1-2 µg/ml, IHC-P: 1-2 µg/ml
Reactivity:	Human
Cross Reactivity:	This antibody does not cross react with Mouse or Rat.
Immunogen:	Synthetic peptide corresponding to amino acids 41-54 of human Bcl-2 protein.
Sequence:	GAAPAPGIFSSQPG-Cys
Host:	Mouse
Clonality:	Oligoclonal
Clone ID:	100/D5 + 124
Isotype:	IgG1, kappa + IgG1, kappa
Conjugate:	Unconjugated
Purification:	Protein A/G chromatography.
Concentration:	1 mg/ml
Product Form:	Liquid
Formulation:	Supplied in 10mM Phosphate Buffered Saline; without Sodium Azide and carrier free.
Storage:	Shipped at 4°C. Upon delivery aliquot and store at -20°C. Avoid freeze / thaw cycles.

## Anti-Bcl-2 Antibody [100/D5 + 124] - BSA and Azide free (A253049)

### Specifications continued:

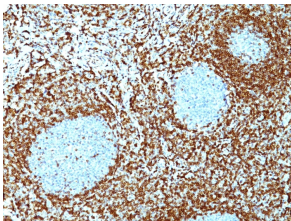
**General Notes:**

Please note, this product is an oligoclonal antibody; it is a cocktail of monoclonal antibodies that have been carefully selected. Oligoclonal antibodies not only have the specificity and batch-to-batch consistency of a monoclonal antibody, but they also have the advantage of the sensitivity of a polyclonal antibody due to their ability to recognize multiple epitopes on an antigen. This oligoclonal antibody is also available in a different formulation with BSA and Sodium Azide - Anti-Bcl-2 Antibody [100/D5 + 124] (A249869).

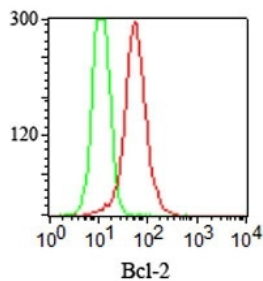
**Disclaimer:**

This product is for research use only. It is not intended for diagnostic or therapeutic use.

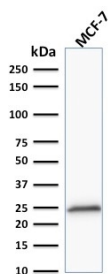
### Images:



Immunohistochemical analysis of formalin-fixed, paraffin-embedded non-Hodgkin's lymphoma using Anti-Bcl-2 Antibody [100/D5+124]. Note, nuclear membrane and cytoplasmic staining.



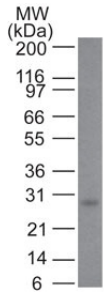
Intracellular staining of Bcl-2 in Jurkat cells using Anti-Bcl-2 Antibody [100/D5+124] (red) and isotype control (green).



Western blot analysis of MCF-7 cell lysate using Anti-Bcl-2 Antibody [100/D5+124].

## Anti-Bcl-2 Antibody [100/D5 + 124] - BSA and Azide free (A253049)

Images continued:



Western blot analysis of human skin tissue lysate using Anti-Bcl-2 Antibody [100/D5+124].