

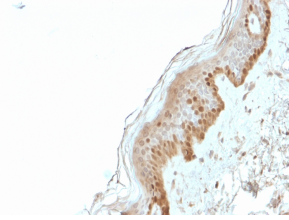
## Anti-S100A2 Antibody [CPTC-S100A2-2] - BSA and Azide free (A253099)

### Specifications:

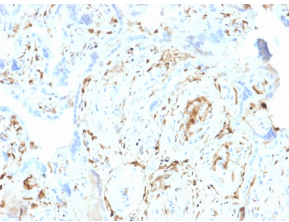
Name:	Anti-S100A2 Antibody [CPTC-S100A2-2] - BSA and Azide free
Description:	Mouse monoclonal [CPTC-S100A2-2] antibody to S100A2.
Specificity:	S100A2 belongs to the S100 family of proteins containing 2 EF-hand calcium-binding motifs. S100A2 may function as a modulator against excess calcium accumulation in normal human mammary epithelial cells and also have a role in suppressing tumor cell growth. This protein may have a tumor suppressor function. Chromosomal rearrangements and altered expression of this gene have been implicated in breast cancer. Cytoplasmic overexpression may also be of prognostic significance when observed in oral cancer patients, and the S100A2 has also been identified as significantly down-regulated in gastric cancer.
Applications:	WB, Flow Cytometry, IF, IHC-P
Recommended Dilutions:	WB: 1-2 µg/ml, Flow Cytometry: 1-2 µg/million cells, IF: 1-2 µg/ml, IHC-P: 1-2 µg/ml
Reactivity:	Human
Immunogen:	Recombinant full-length human S100A2 protein.
Host:	Mouse
Clonality:	Monoclonal
Clone ID:	CPTC-S100A2-2
Isotype:	IgG2b
Light Chains:	kappa
Conjugate:	Unconjugated
Purification:	Protein A/G chromatography.
Concentration:	1 mg/ml
Product Form:	Liquid
Formulation:	Supplied in 10mM Phosphate Buffered Saline; without Sodium Azide and carrier free.
Storage:	Shipped at 4°C. Upon delivery aliquot and store at -20°C. Avoid freeze / thaw cycles.
General Notes:	This monoclonal antibody is also available in a different formulation with BSA and Sodium Azide - Anti-S100A2 Antibody [CPTC-S100A2-2] (A249919).
Disclaimer:	This product is for research use only. It is not intended for diagnostic or therapeutic use.

## Anti-S100A2 Antibody [CPTC-S100A2-2] - BSA and Azide free (A253099)

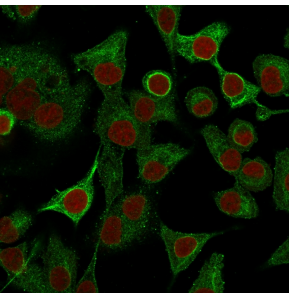
### Images:



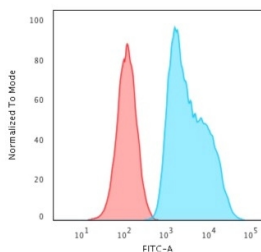
Immunohistochemical analysis of formalin-fixed, paraffin-embedded human skin using Anti-S100A2 Antibody [CPTC-S100A2-2].



Immunohistochemical analysis of formalin-fixed, paraffin-embedded human placenta using Anti-S100A2 Antibody [CPTC-S100A2-2].



Immunofluorescent analysis of A549 cells stained with Anti-S100A2 Antibody [CPTC-S100A2-2] followed by Goat Anti-Mouse IgG (CF@ 488) (Green). The nuclear counterstain is RedDot (Red).



Flow cytometric analysis of trypsinised HeLa cells using Anti-S100A2 Antibody [CPTC-S100A2-2] followed by Goat Anti-Mouse IgG (CF@ 488) (Blue). Isotype Control (Red).