

Anti-S100 beta Antibody [SPM354] - BSA and Azide free (A253115)

Specifications:

| | |
|------------------------|---|
| Name: | Anti-S100 beta Antibody [SPM354] - BSA and Azide free |
| Description: | Mouse monoclonal [SPM354] antibody to S100 beta. |
| Specificity: | S100 belongs to the family of calcium binding proteins. S100A and S100B proteins are two members of the S100 family. S100A is composed of an alpha and a beta chain whereas S100B is composed of two beta chains. This antibody is specific against an epitope located on the beta-chain (i.e. in S-100A and S-100B) but not on the alpha-chain of S-100 (i.e. in S-100A and S100A0). This antibody can be used to localize S-100A and S-100B in various tissue sections. S-100 protein has been found in normal melanocytes, Langerhans cells, histiocytes, chondrocytes, lipocytes, skeletal and cardiac muscle, Schwann cells, epithelial and myoepithelial cells of the breast, salivary and sweat glands, as well as in glial cells. Neoplasms derived from these cells also express S-100 protein, albeit non-uniformly. A large number of well-differentiated tumors of the salivary gland, adipose and cartilaginous tissue, and Schwann cell-derived tumors express S-100 protein. Almost all malignant melanomas and cases of histiocytosis X are positive for S-100 protein. |
| Applications: | Flow Cytometry, IF, WB, IHC-P |
| Recommended Dilutions: | Flow Cytometry: 1-2 µg/million cells, IF: 1-2 µg/ml, WB: 1-2 µg/ml, IHC-P: 1-2 µg/ml |
| Reactivity: | Human, Mouse, Rat, Bovine |
| Immunogen: | Native purified bovine brain S100 protein. |
| Host: | Mouse |
| Clonality: | Monoclonal |
| Clone ID: | SPM354 |
| Isotype: | IgG2a |
| Light Chains: | kappa |
| Conjugate: | Unconjugated |
| Purification: | Protein A/G chromatography. |
| Concentration: | 1 mg/ml |
| Product Form: | Liquid |
| Formulation: | Supplied in 10mM Phosphate Buffered Saline; without Sodium Azide and carrier free. |
| Storage: | Shipped at 4°C. Upon delivery aliquot and store at -20°C. Avoid freeze / thaw cycles. |

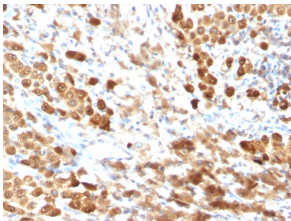
Anti-S100 beta Antibody [SPM354] - BSA and Azide free (A253115)

Specifications continued:

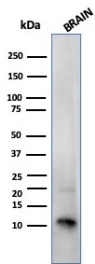
General Notes: This monoclonal antibody is also available in a different formulation with BSA and Sodium Azide - Anti-S100 beta Antibody [SPM354] (A249935).

Disclaimer: This product is for research use only. It is not intended for diagnostic or therapeutic use.

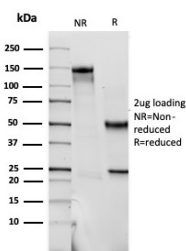
Images:



Immunohistochemical analysis of formalin-fixed, paraffin-embedded human melanoma using Anti-S100 beta Antibody [SPM354].



Western blot analysis of human brain lysate using Anti-S100 beta Antibody [SPM354].



SDS-PAGE analysis of Anti-S100 beta Antibody [SPM354] under non-reduced and reduced conditions; showing intact IgG and intact heavy and light chains, respectively. SDS-PAGE analysis confirms the integrity and purity of the antibody.