

## Anti-GLUT1 Antibody [GLUT1/2475] - BSA and Azide free (A253158)

### Specifications:

Name:	Anti-GLUT1 Antibody [GLUT1/2475] - BSA and Azide free
Description:	Mouse monoclonal [GLUT1/2475] antibody to GLUT1.
Specificity:	This antibody recognizes a protein of 55kDa, which is identified as GLUT-1. Glucose transporters are integral membrane glycoproteins involved in transporting glucose into most cells. There are many types of glucose transport carrier proteins, designated as Glut-1 to Glut-12. Glut-1 is a major glucose transporter in the mammalian blood-brain barrier. It is expressed in high density on the membranes of human erythrocytes and the brain capillaries that comprise the blood-brain barrier. Glut-1 is expressed at variable levels in many human tissues. Overexpression of Glut-1 has been linked to tumor progression or poor survival of patients with carcinomas of the colon, breast, cervical, lung, bladder and mesothelioma. Glut-1 is a sensitive and specific marker for the differentiation of malignant mesothelioma (positive) from reactive mesothelium (negative).
Applications:	ELISA, Flow Cytometry, IF, WB, IHC-P
Recommended Dilutions:	ELISA: 1-2 µg/ml, Flow Cytometry: 1-2 µg/million cells, IF: 1-2 µg/ml, WB: 1-2 µg/ml, IHC-P: 1-2 µg/ml
Reactivity:	Human
Immunogen:	Recombinant fragment, around amino acids 203-305, of human GLUT1 protein. The exact sequence is proprietary.
Host:	Mouse
Clonality:	Monoclonal
Clone ID:	GLUT1/2475
Isotype:	IgG2b
Light Chains:	kappa
Conjugate:	Unconjugated
Purification:	Protein A/G chromatography.
Concentration:	1 mg/ml
Product Form:	Liquid
Formulation:	Supplied in 10mM Phosphate Buffered Saline; without Sodium Azide and carrier free.
Storage:	Shipped at 4°C. Upon delivery aliquot and store at -20°C. Avoid freeze / thaw cycles.

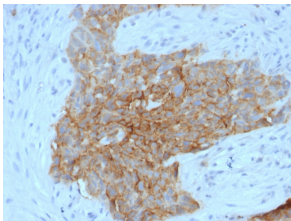
# Anti-GLUT1 Antibody [GLUT1/2475] - BSA and Azide free (A253158)

## Specifications continued:

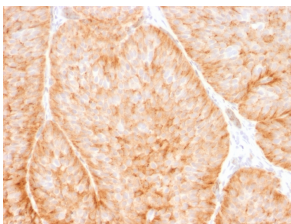
**General Notes:** This monoclonal antibody is also available in a different formulation with BSA and Sodium Azide - Anti-GLUT1 Antibody [GLUT1/2475] (A249978).

**Disclaimer:** This product is for research use only. It is not intended for diagnostic or therapeutic use.

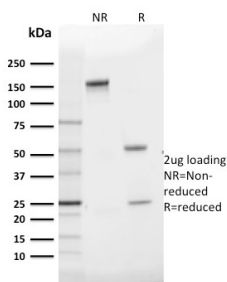
## Images:



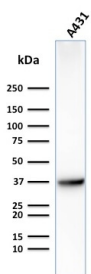
Immunohistochemical analysis of formalin-fixed, paraffin-embedded human tongue using Anti-GLUT1 Antibody [GLUT1/2475].



Immunohistochemical analysis of formalin-fixed, paraffin-embedded human bladder carcinoma using Anti-GLUT1 Antibody [GLUT1/2475].



SDS-PAGE analysis of Anti-GLUT1 Antibody [GLUT1/2475] under non-reduced and reduced conditions; showing intact IgG and intact heavy and light chains, respectively. SDS-PAGE analysis confirms the integrity and purity of the antibody.



Western blot analysis of human A431 cell lysate using Anti-GLUT1 Antibody [GLUT1/2475].