

Anti-SIGLEC1 Antibody [HSn 7D2] - BSA and Azide free (A253169)

Specifications:

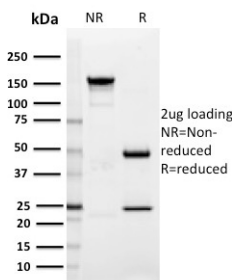
Name:	Anti-SIGLEC1 Antibody [HSn 7D2] - BSA and Azide free
Description:	Mouse monoclonal [HSn 7D2] antibody to SIGLEC1.
Specificity:	Two families of mammalian lectin-like adhesion molecules, the selectins and the sialoadhesins, bind glycoconjugate ligands in a sialic acid-dependent manner. The sialic acid-binding immunoglobulin superfamily lectins, designated siglecs or sialoadhesins, are immunoglobulin superfamily members that recognize sialylated ligands. The common sialic acids of mammalian cells are N-acetylneuraminic acid (Neu5Ac) and N-glycolylneuraminic acid (Neu5Gc). The human Siglec-1 gene maps to chromosome 20p13 and encodes a 1,709 amino acid protein, also known as CD169. Alternative splicing of the Siglec-1 gene produces a variant, encoding a type I transmembrane protein isoform that is soluble rather than membrane-bound. Studies have shown human Siglec-1 has greater affinity for Neu5Ac over Neu5Gc. Siglec-1 is a sialic acid-binding receptor that is expressed in hemopoietic cells. It mediates local cell-cell interactions in lymphoid tissues and can be detected at contact points of macrophages with other macrophages, sinus-lining cells and reticulum cells.
Applications:	Flow Cytometry, IF, WB, IHC-P
Recommended Dilutions:	Flow Cytometry: 1-2 µg/million cells, IF: 1-2 µg/ml, WB: 1-2 µg/ml, IHC-P: 1-2 µg/ml
Reactivity:	Human
Immunogen:	Fc fusion protein containing N-terminal 4 domains of human sialoadhesin.
Host:	Mouse
Clonality:	Monoclonal
Clone ID:	HSn 7D2
Isotype:	IgG1
Light Chains:	kappa
Conjugate:	Unconjugated
Purification:	Protein A/G chromatography.
Concentration:	1 mg/ml
Product Form:	Liquid
Formulation:	Supplied in 10mM Phosphate Buffered Saline; without Sodium Azide and carrier free.

Anti-SIGLEC1 Antibody [HSn 7D2] - BSA and Azide free (A253169)

Specifications continued:

Storage:	Shipped at 4°C. Upon delivery aliquot and store at -20°C. Avoid freeze / thaw cycles.
General Notes:	This monoclonal antibody is also available in a different formulation with BSA and Sodium Azide - Anti-SIGLEC1 Antibody [HSn 7D2] (A249989).
Disclaimer:	This product is for research use only. It is not intended for diagnostic or therapeutic use.

Images:



SDS-PAGE analysis of Anti-SIGLEC1 Antibody [HSn 7D2] under non-reduced and reduced conditions; showing intact IgG and intact heavy and light chains, respectively. SDS-PAGE analysis confirms the integrity and purity of the antibody.