

Anti-Spastin Antibody [Sp 6C6] - BSA and Azide free (A253202)

Specifications:

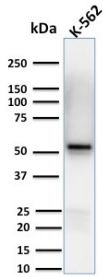
Name:	Anti-Spastin Antibody [Sp 6C6] - BSA and Azide free
Description:	Mouse monoclonal [Sp 6C6] antibody to Spastin.
Specificity:	The AAA protein family members share an ATPase domain and have roles in various cellular processes including intracellular motility, membrane trafficking, proteolysis, protein folding and organelle biogenesis. Spastin, a member of the AAA protein family, is a 616 amino acid protein and is involved in the function or assembly of nuclear protein complexes. The Spastin protein is expressed ubiquitously and localizes to the nucleus and the cytoplasm, where it may also be involved in microtubule dynamics. Mutations in the Spastin gene (SPAST, SPG4) cause the most common form of spastic paraplegia 4, an autosomal dominant form of hereditary spastic paraplegia (HSP). HSPs comprise a group of inherited neurological disorders characterized by spastic lower extremity weakness due to a length-dependent, retrograde axonopathy of corticospinal motor neurons. SPAST-specific mutations account for approximately 40% of all autosomal dominant HSPs.
Applications:	IF, WB
Recommended Dilutions:	IF: 1-2 µg/ml, IHC: 1-2 µg/ml
Reactivity:	Human, Mouse, Rat
Immunogen:	Recombinant full-length human Spastin protein.
Host:	Mouse
Clonality:	Monoclonal
Clone ID:	Sp 6C6
Isotype:	IgG2a
Light Chains:	kappa
Conjugate:	Unconjugated
Purification:	Protein A/G chromatography.
Concentration:	1 mg/ml
Product Form:	Liquid
Formulation:	Supplied in 10mM Phosphate Buffered Saline; without Sodium Azide and carrier free.
Storage:	Shipped at 4°C. Upon delivery aliquot and store at -20°C. Avoid freeze / thaw cycles.
General Notes:	This monoclonal antibody is also available in a different formulation with BSA and Sodium Azide - Anti-Spastin Antibody [Sp 6C6] (A250022).

Anti-Spastin Antibody [Sp 6C6] - BSA and Azide free (A253202)

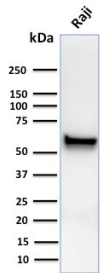
Specifications continued:

Disclaimer: This product is for research use only. It is not intended for diagnostic or therapeutic use.

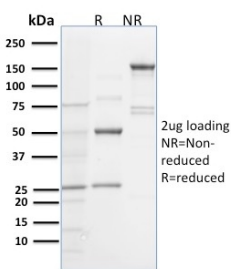
Images:



Western blot analysis of human K562 cell lysate using Anti-Spastin Antibody [Sp 6C6].



Western blot analysis of human Raji cell lysate using Anti-Spastin Antibody [Sp 6C6].



SDS-PAGE analysis of Anti-Spastin Antibody [Sp 6C6] under non-reduced and reduced conditions; showing intact IgG and intact heavy and light chains, respectively. SDS-PAGE analysis confirms the integrity and purity of the antibody.