

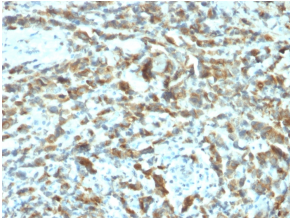
Anti-Estrogen Inducible Protein pS2 Antibody [TFF1/2133] - BSA and Azide free (A253268)

Specifications:

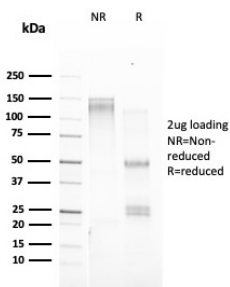
Name:	Anti-Estrogen Inducible Protein pS2 Antibody [TFF1/2133] - BSA and Azide free
Description:	Mouse monoclonal [TFF1/2133] antibody to Estrogen Inducible Protein pS2.
Specificity:	The epitope of this antibody is located in the C-terminus of human pS2 protein.
Applications:	Flow Cytometry, IF, IHC-P
Recommended Dilutions:	Flow Cytometry: 1-2 µg/million cells, IF: 1-2 µg/ml, IHC-P: 1-2 µg/ml
Reactivity:	Human
Immunogen:	Recombinant full-length human TFF1 protein.
Host:	Mouse
Clonality:	Monoclonal
Clone ID:	TFF1/2133
Isotype:	IgG2b
Light Chains:	kappa
Conjugate:	Unconjugated
Purification:	Protein A/G chromatography.
Concentration:	1 mg/ml
Product Form:	Liquid
Formulation:	Supplied in 10mM Phosphate Buffered Saline; without Sodium Azide and carrier free.
Storage:	Shipped at 4°C. Upon delivery aliquot and store at -20°C. Avoid freeze / thaw cycles.
General Notes:	This monoclonal antibody is also available in a different formulation with BSA and Sodium Azide - Anti-Estrogen Inducible Protein pS2 Antibody [TFF1/2133] (A250088).
Disclaimer:	This product is for research use only. It is not intended for diagnostic or therapeutic use.

Anti-Estrogen Inducible Protein pS2 Antibody [TFF1/2133] - BSA and Azide free (A253268)

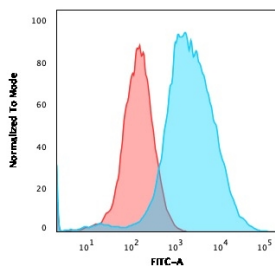
Images:



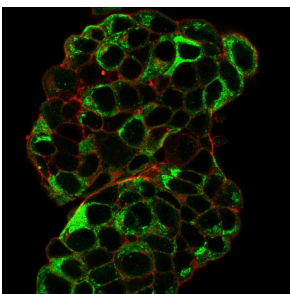
Immunohistochemical analysis of formalin-fixed, paraffin-embedded human breast carcinoma using Anti-Estrogen Inducible Protein pS2 Antibody [TFF1/2133].



SDS-PAGE analysis of Anti-Estrogen Inducible Protein pS2 Antibody [TFF1/2133] under non-reduced and reduced conditions; showing intact IgG and intact heavy and light chains, respectively. SDS-PAGE analysis confirms the integrity and purity of the antibody.



Flow cytometric analysis of PFA fixed MCF-7 cells using Anti-Estrogen Inducible Protein pS2 Antibody [TFF1/2133] followed by Goat Anti-Mouse IgG (CF® 488) (Blue). Isotype Control (Red).



Immunofluorescent analysis of paraformaldehyde fixed MCF-7 cells stained with Anti-Estrogen Inducible Protein pS2 Antibody [TFF1/2133] followed by Goat Anti-Mouse IgG (CF® 488) (Green). Counterstain is Phalloidin (Red).