

Anti-Thyroglobulin Antibody [SPM221] - BSA and Azide free (A253284)

Specifications:

Name:	Anti-Thyroglobulin Antibody [SPM221] - BSA and Azide free
Description:	Mouse monoclonal [SPM221] antibody to Thyroglobulin.
Specificity:	Thyroglobulin is a 660kDa dimeric pre-protein with multiple glycosylation sites. It is produced by and processed within the thyroid gland to produce the hormone thyroxine and triiodothyronine. Prior to forming dimers, thyroglobulin monomers undergo conformational maturation in the endoplasmic reticulum. The vast majority of follicular carcinomas of the thyroid will give positive immunoreactivity for anti-thyroglobulin even though sometimes only focally. Poorly differentiated carcinomas of the thyroid are frequently anti-thyroglobulin negative. Adenocarcinomas of other-than-thyroid origin do not react with this antibody. This antibody is useful in identification of thyroid carcinoma of the papillary and follicular types. Presence of thyroglobulin in metastatic lesions establishes the thyroid origin of tumor. Anti-thyroglobulin, combined with anti-calcitonin, can identify medullary carcinomas of the thyroid. Furthermore, anti-thyroglobulin, combined with anti-TTF1, can be a reliable marker to differentiate between primary thyroid and lung neoplasms.
Applications:	ELISA, Flow Cytometry, WB, IHC-P
Recommended Dilutions:	Flow Cytometry: 1-2 µg/million cells, WB: 1-2 µg/ml, IHC-P: 1-2 µg/ml
Reactivity:	Human, Mouse, Rat
Immunogen:	Human thyroid follicular cells.
Host:	Mouse
Clonality:	Monoclonal
Clone ID:	SPM221
Isotype:	IgG1
Light Chains:	kappa
Conjugate:	Unconjugated
Purification:	Protein A/G chromatography.
Concentration:	1 mg/ml
Product Form:	Liquid
Formulation:	Supplied in 10mM Phosphate Buffered Saline; without Sodium Azide and carrier free.
Storage:	Shipped at 4°C. Upon delivery aliquot and store at -20°C. Avoid freeze / thaw cycles.

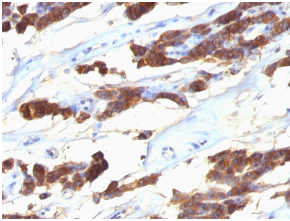
Anti-Thyroglobulin Antibody [SPM221] - BSA and Azide free (A253284)

Specifications continued:

General Notes: This monoclonal antibody is also available in a different formulation with BSA and Sodium Azide - Anti-Thyroglobulin Antibody [SPM221] (A250104).

Disclaimer: This product is for research use only. It is not intended for diagnostic or therapeutic use.

Images:



Immunohistochemical analysis of formalin-fixed, paraffin-embedded human thyroid carcinoma using Anti-Thyroglobulin Antibody [SPM221].