

Anti-TIMP1 Antibody [2A5] - BSA and Azide free (A253310)

Specifications:

Name:	Anti-TIMP1 Antibody [2A5] - BSA and Azide free
Description:	Mouse monoclonal [2A5] antibody to TIMP1.
Specificity:	TIMP-1, TIMP-2, TIMP-3 and TIMP-4 (for tissue inhibitor of metalloproteinases -1, -2, -3 and -4) complex with metalloproteinases such as collagenases, gelatinases and stromelysins, resulting in irreversible inactivation of the metalloproteinase. TIMP-1 is identical to EPA (erythroid-potential activity). PTH has been shown to be a regulator of TIMP-2 in osteoblastic cells. TIMP-3 may be involved in regulating trophoblastic invasion of the uterus as well as in regulating remodeling of the extracellular matrix during the folding of epithelia, and in the formation, branching and expansion of epithelial tubes. TIMP-4 is most highly expressed in heart tissues. Studies have demonstrated that TIMP1 is useful as a biomarker for early detection of colorectal cancer, outperforming CEA. Additionally, TIMP1 studies have demonstrated its role in CRC tumorigenesis, as well as observing its overexpression in metastatic lymph nodes.
Applications:	ELISA
Reactivity:	Human
Immunogen:	Synthetic peptide corresponding to amino acids 72-82 of human TIMP1 protein.
Sequence:	FQALGDAADIR
Host:	Mouse
Clonality:	Monoclonal
Clone ID:	2A5
Isotype:	IgG1
Light Chains:	kappa
Conjugate:	Unconjugated
Purification:	Protein A chromatography.
Concentration:	1 mg/ml
Product Form:	Liquid
Formulation:	Supplied in 10mM Phosphate Buffered Saline; without Sodium Azide and carrier free.
Storage:	Shipped at 4°C. Upon delivery aliquot and store at -20°C. Avoid freeze / thaw cycles.

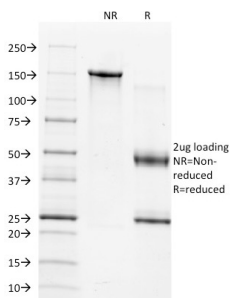
Anti-TIMP1 Antibody [2A5] - BSA and Azide free (A253310)

Specifications continued:

General Notes: This monoclonal antibody is also available in a different formulation with BSA and Sodium Azide - Anti-TIMP1 Antibody [2A5] (A250130).

Disclaimer: This product is for research use only. It is not intended for diagnostic or therapeutic use.

Images:



SDS-PAGE analysis of Anti-TIMP1 Antibody [2A5] under non-reduced and reduced conditions; showing intact IgG and intact heavy and light chains, respectively. SDS-PAGE analysis confirms the integrity and purity of the antibody.