

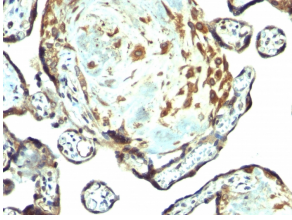
Anti-TIMP3 Antibody - BSA and Azide free (A253318)

Specifications:

Name:	Anti-TIMP3 Antibody - BSA and Azide free
Description:	Rabbit polyclonal antibody to TIMP3.
Specificity:	TIMP3 (tissue inhibitor of metalloproteinases 3), along with family members TIMP1, TIMP2, and TIMP4, are inhibitors of the matrix metalloproteinases (MMPs), a group of peptidases involved in degradation of the extracellular matrix (ECM). An imbalance between MMPs and the associated TIMPs may play a significant role in the invasive phenotype of malignant tumors. TIMPs inhibit the proteolytic invasiveness of tumor cells and normal placental trophoblast cells. TIMP-3 may be involved in regulating trophoblastic invasion of the uterus as well as in regulating remodeling of the extracellular matrix during the folding of epithelia, and in the formation, branching and expansion of epithelial tubes.
Applications:	Flow Cytometry, IF, IHC-P
Recommended Dilutions:	Flow Cytometry: 1-2 µg/million cells, IF: 1-2 µg/ml, IHC-P: 1-2 µg/ml
Reactivity:	Human, Mouse, Rat, Horse, Bovine, Canine
Immunogen:	Synthetic peptide corresponding to amino acids 175-211 of TIMP3.
Host:	Rabbit
Clonality:	Polyclonal
Isotype:	IgG
Conjugate:	Unconjugated
Purification:	Protein A chromatography.
Concentration:	1 mg/ml
Product Form:	Liquid
Formulation:	Supplied in 10mM Phosphate Buffered Saline; without Sodium Azide and carrier free.
Storage:	Shipped at 4°C. Upon delivery aliquot and store at -20°C. Avoid freeze / thaw cycles.
General Notes:	This monoclonal antibody is also available in a different formulation with BSA and Sodium Azide - Anti-TIMP3 Antibody (A250138).
Disclaimer:	This product is for research use only. It is not intended for diagnostic or therapeutic use.

Anti-TIMP3 Antibody - BSA and Azide free (A253318)

Images:



Immunohistochemical analysis of formalin-fixed, paraffin-embedded human placenta using Anti-TIMP3 Antibody.