

Anti-Von Willebrand Factor Antibody [3E2D10] - BSA and Azide free (A253500)

Specifications:

Name:	Anti-Von Willebrand Factor Antibody [3E2D10] - BSA and Azide free
Description:	Mouse monoclonal [3E2D10] antibody to Von Willebrand Factor.
Specificity:	von Willebrand Factor (vWF) is a multimeric glycoprotein that is found in endothelial cells, plasma and platelets. It acts as a carrier protein for Factor VIII and promotes platelet adhesion and aggregation. vWF undergoes a variety of posttranslational modifications that influence the affinity and availability for Factor VIII, including cleavage of the propeptide and formation of N-terminal disulfide bonds. This antibody helps to establish the endothelial nature of some lesions of disputed histogenesis, e.g. Kaposi sarcoma and cardiac myxoma. It is widely used for differentiating vascular lesions from those of other tissue differentiation within a panel of other vascular markers although not all tumors of endothelial differentiation contain this antigen.
Applications:	Flow Cytometry, IF, WB, IP, IHC-P
Recommended Dilutions:	Flow Cytometry: 1-2 µg/million cells, IF: 1-2 µg/ml, WB: 1-2 µg/ml, IP: 1-2 µg / 500 µg protein, IHC-P: 1-2 µg/ml
Reactivity:	Human
Immunogen:	Recombinant fragment, around amino acids 845-949, of human vWF protein. The exact sequence is proprietary.
Host:	Mouse
Clonality:	Monoclonal
Clone ID:	3E2D10
Isotype:	IgG1
Light Chains:	kappa
Conjugate:	Unconjugated
Purification:	Protein A/G chromatography.
Concentration:	1 mg/ml
Product Form:	Liquid
Formulation:	Supplied in 10mM Phosphate Buffered Saline; without Sodium Azide and carrier free.
Storage:	Shipped at 4°C. Upon delivery aliquot and store at -20°C. Avoid freeze / thaw cycles.

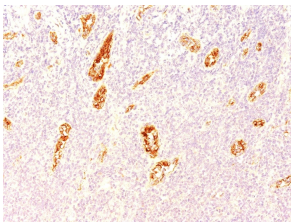
Anti-Von Willebrand Factor Antibody [3E2D10] - BSA and Azide free (A253500)

Specifications continued:

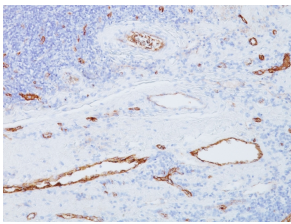
General Notes: This monoclonal antibody is also available in a different formulation with BSA and Sodium Azide - Anti-Von Willebrand Factor Antibody [3E2D10] (A250320).

Disclaimer: This product is for research use only. It is not intended for diagnostic or therapeutic use.

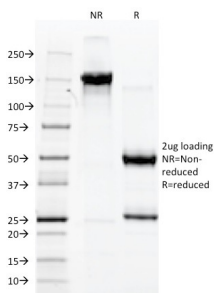
Images:



Immunohistochemical analysis of formalin-fixed, paraffin-embedded human pancreas using Anti-Von Willebrand Factor Antibody [3E2D10].



Immunohistochemical analysis of formalin-fixed, paraffin-embedded human tonsil using Anti-Von Willebrand Factor Antibody [3E2D10].



SDS-PAGE analysis of Anti-Von Willebrand Factor Antibody [3E2D10] under non-reduced and reduced conditions; showing intact IgG and intact heavy and light chains, respectively. SDS-PAGE analysis confirms the integrity and purity of the antibody.