

Anti-Von Willebrand Factor Antibody [VWF635] - BSA and Azide free (A253501)

Specifications:

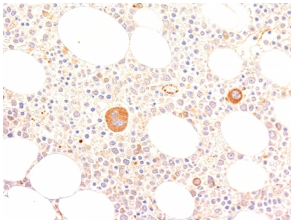
Name:	Anti-Von Willebrand Factor Antibody [VWF635] - BSA and Azide free
Description:	Mouse monoclonal [VWF635] antibody to Von Willebrand Factor.
Specificity:	von Willebrand Factor (vWF) is a multimeric glycoprotein that is found in endothelial cells, plasma and platelets. It acts as a carrier protein for Factor VIII and promotes platelet adhesion and aggregation. vWF undergoes a variety of posttranslational modifications that influence the affinity and availability for Factor VIII, including cleavage of the propeptide and formation of N-terminal disulfide bonds. This antibody helps to establish the endothelial nature of some lesions of disputed histogenesis, e.g. Kaposi s sarcoma and cardiac myxoma. It is widely used for differentiating vascular lesions from those of other tissue differentiation within a panel of other vascular markers although not all tumors of endothelial differentiation contain this antigen.
Applications:	IP, Flow Cytometry, IF, WB, IHC-P
Recommended Dilutions:	IP: 0.5-1 µg / 500 µg protein lysate, Flow Cytometry: 1-2 µg/million cells, IF: 1-2 µg/ml, WB: 1-2 µg/ml, IHC-P: 1-2 µg/ml
Reactivity:	Human
Immunogen:	Recombinant fragment, around amino acids 845-949, of human vWF protein. The exact sequence is proprietary.
Host:	Mouse
Clonality:	Monoclonal
Clone ID:	VWF635
Isotype:	IgG1
Light Chains:	kappa
Conjugate:	Unconjugated
Purification:	Protein A/G chromatography.
Concentration:	1 mg/ml
Product Form:	Liquid
Formulation:	Supplied in 10mM Phosphate Buffered Saline; without Sodium Azide and carrier free.
Storage:	Shipped at 4°C. Upon delivery aliquot and store at -20°C. Avoid freeze / thaw cycles.

Anti-Von Willebrand Factor Antibody [VWF635] - BSA and Azide free (A253501)

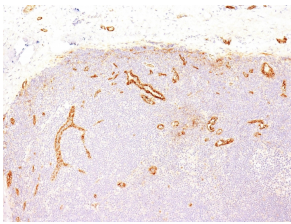
Specifications continued:

General Notes:	This monoclonal antibody is also available in a different formulation with BSA and Sodium Azide - Anti-Von Willebrand Factor Antibody [VWF635] (A250321).
Disclaimer:	This product is for research use only. It is not intended for diagnostic or therapeutic use.

Images:



Immunohistochemical analysis of formalin-fixed, paraffin-embedded human bone marrow using Anti-Von Willebrand Factor Antibody [VWF635].



Immunohistochemical analysis of formalin-fixed, paraffin-embedded human tonsil using Anti-Von Willebrand Factor Antibody [VWF635].