

## Anti-Von Willebrand Factor Antibody [3E2D10 + VWF635] - BSA and Azide free (A253503)

### Specifications:

Name:	Anti-Von Willebrand Factor Antibody [3E2D10 + VWF635] - BSA and Azide free
Description:	Mouse monoclonal [3E2D10 + VWF635] antibody to Von Willebrand Factor.
Specificity:	von Willebrand Factor (vWF) is a multimeric glycoprotein that is found in endothelial cells, plasma and platelets. It acts as a carrier protein for Factor VIII and promotes platelet adhesion and aggregation. vWF undergoes a variety of posttranslational modifications that influence the affinity and availability for Factor VIII, including cleavage of the propeptide and formation of N-terminal disulfide bonds. This antibody helps to establish the endothelial nature of some lesions of disputed histogenesis, e.g. Kaposi s sarcoma and cardiac myxoma. It is widely used for differentiating vascular lesions from those of other tissue differentiation within a panel of other vascular markers although not all tumors of endothelial differentiation contain this antigen.
Applications:	IP, Flow Cytometry, IF, WB, IHC-P
Recommended Dilutions:	IP: 1-2 µg / 500 µg protein lysate, Flow Cytometry: 1-2 µg/million cells, IF: 1-2 µg/ml, WB: 1-2 µg/ml, IHC-P: 1-2 µg/ml
Reactivity:	Human
Immunogen:	Recombinant fragment, around amino acids 845-949, of human vWF protein. The exact sequence is proprietary.
Host:	Mouse
Clonality:	Oligoclonal
Clone ID:	3E2D10 + VWF635
Isotype:	IgG1, kappa [3E2D10] + IgG1, kappa [VWF635]
Conjugate:	Unconjugated
Purification:	Protein A/G chromatography.
Concentration:	1 mg/ml
Product Form:	Liquid
Formulation:	Supplied in 10mM Phosphate Buffered Saline; without Sodium Azide and carrier free.
Storage:	Shipped at 4°C. Upon delivery aliquot and store at -20°C. Avoid freeze / thaw cycles.

## Anti-Von Willebrand Factor Antibody [3E2D10 + VWF635] - BSA and Azide free (A253503)

### Specifications continued:

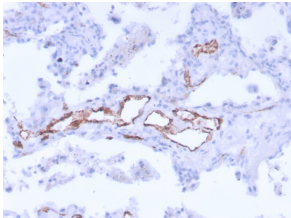
#### General Notes:

Please note, this product is an oligoclonal antibody; it is a cocktail of monoclonal antibodies that have been carefully selected. Oligoclonal antibodies not only have the specificity and batch-to-batch consistency of a monoclonal antibody, but they also have the advantage of the sensitivity of a polyclonal antibody due to their ability to recognize multiple epitopes on an antigen. This oligoclonal antibody is also available in a different formulation with BSA and Sodium Azide - Anti-Von Willebrand Factor Antibody [3E2D10 + VWF635] (A250323).

#### Disclaimer:

This product is for research use only. It is not intended for diagnostic or therapeutic use.

### Images:



Immunohistochemical analysis of formalin-fixed, paraffin-embedded human uterus using Anti-Von Willebrand Factor Antibody [3E2D10 + VWF635].