

Anti-PAX8 Antibody [PAX8/1491] - BSA and Azide free (A253540)

Specifications:

| | |
|------------------------|--|
| Name: | Anti-PAX8 Antibody [PAX8/1491] - BSA and Azide free |
| Description: | Mouse monoclonal [PAX8/1491] antibody to PAX8. |
| Specificity: | This antibody recognizes a protein of 62kDa, identified as PAX8. It is a member of the paired box (PAX) family of transcription factors. This nuclear protein is involved in thyroid follicular cell development and expression of thyroid-specific genes. Mutations in this gene have been associated with thyroid dysgenesis, thyroid follicular carcinomas, and atypical thyroid adenomas. PAX-8 is expressed in the thyroid (and associated carcinomas), non-ciliated mucosal cells of the fallopian tubes, and simple ovarian inclusion cysts, but not normal ovarian surface epithelial cells. PAX-8 is expressed in a high percentage of ovarian serous, endometrioid, and clear cell carcinomas, but only rarely in primary ovarian mucinous adenocarcinomas. PAX-8 expression is reported in renal tubules as well as renal cell carcinoma, nephroblastoma, and seminoma. PAX-8 antibody may be used as an additional immunohistochemical marker for renal epithelial tumors. |
| Applications: | WB, IHC-P |
| Recommended Dilutions: | WB: 1-2 µg/ml, IHC-P: 1-2 µg/ml |
| Reactivity: | Human |
| Immunogen: | Recombinant fragment, around amino acids 60-261, of human PAX8 protein. The exact sequence is proprietary. |
| Host: | Mouse |
| Clonality: | Monoclonal |
| Clone ID: | PAX8/1491 |
| Isotype: | IgG2b |
| Light Chains: | kappa |
| Conjugate: | Unconjugated |
| Purification: | Protein A/G chromatography. |
| Concentration: | 1 mg/ml |
| Product Form: | Liquid |
| Formulation: | Supplied in 10mM Phosphate Buffered Saline; without Sodium Azide and carrier free. |
| Storage: | Shipped at 4°C. Upon delivery aliquot and store at -20°C. Avoid freeze / thaw cycles. |

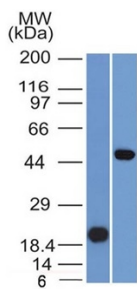
Anti-PAX8 Antibody [PAX8/1491] - BSA and Azide free (A253540)

Specifications continued:

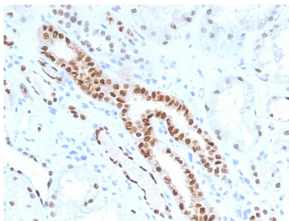
General Notes: This monoclonal antibody is also available in a different formulation with BSA and Sodium Azide - Anti-PAX8 Antibody [PAX8/1491] (A250360).

Disclaimer: This product is for research use only. It is not intended for diagnostic or therapeutic use.

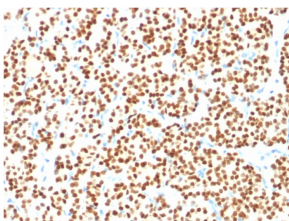
Images:



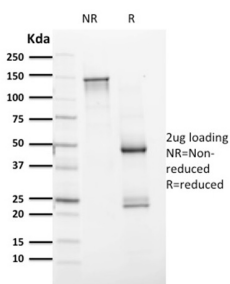
Western blot analysis of (A) recombinant PAX8 protein and (B) Raji cell lysate using Anti-PAX8 Antibody [PAX8/1491].



Immunohistochemical analysis of formalin-fixed, paraffin-embedded human renal cell carcinoma using Anti-PAX8 Antibody [PAX8/1491].



Immunohistochemical analysis of formalin-fixed, paraffin-embedded human thyroid carcinoma using Anti-PAX8 Antibody [PAX8/1491].



SDS-PAGE analysis of Anti-PAX8 Antibody [PAX8/1491] under non-reduced and reduced conditions; showing intact IgG and intact heavy and light chains, respectively. SDS-PAGE analysis confirms the integrity and purity of the antibody.