

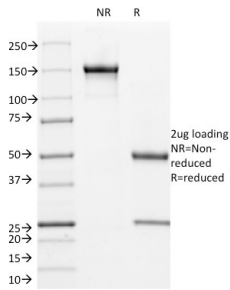
Anti-Cyclin B1 Antibody [V92.1] - BSA and Azide free (A253639)

Specifications:

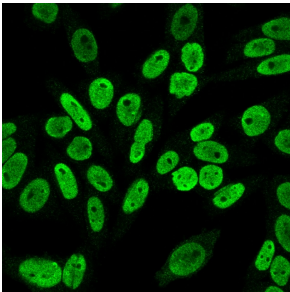
Name:	Anti-Cyclin B1 Antibody [V92.1] - BSA and Azide free
Description:	Mouse monoclonal [V92.1] antibody to Cyclin B1.
Applications:	Flow Cytometry, IF, IP
Recommended Dilutions:	Flow Cytometry: 1-2 µg/million cells, IF: 1-2 µg/ml, IP: 1-2 µg / 500 µg protein
Reactivity:	Human, Mouse, Hamster
Immunogen:	Hamster Cyclin B1 protein.
Host:	Mouse
Clonality:	Monoclonal
Clone ID:	V92.1
Isotype:	IgG1
Light Chains:	kappa
Conjugate:	Unconjugated
Purification:	Protein A/G chromatography.
Concentration:	1 mg/ml
Product Form:	Liquid
Formulation:	Supplied in 10mM Phosphate Buffered Saline; without Sodium Azide and carrier free.
Storage:	Shipped at 4°C. Upon delivery aliquot and store at -20°C. Avoid freeze / thaw cycles.
General Notes:	This monoclonal antibody is also available in a different formulation with BSA and Sodium Azide - Anti-Cyclin B1 Antibody [V92.1] (A250459).
Disclaimer:	This product is for research use only. It is not intended for diagnostic or therapeutic use.

Anti-Cyclin B1 Antibody [V92.1] - BSA and Azide free (A253639)

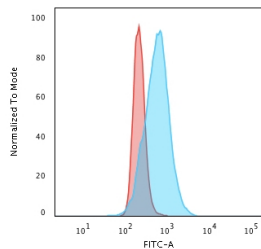
Images:



SDS-PAGE analysis of Anti-Cyclin B1 Antibody [V92.1] under non-reduced and reduced conditions; showing intact IgG and intact heavy and light chains, respectively. SDS-PAGE analysis confirms the integrity and purity of the antibody.



Immunofluorescent analysis of PFA fixed HeLa cells stained with Anti-Cyclin B1 Antibody [V92.1] followed by Goat Anti-Mouse IgG (CF® 488) (Green).



Flow cytometric analysis of paraformaldehyde fixed HeLa cells using Anti-Cyclin B1 Antibody [V92.1] followed by Goat Anti-Mouse IgG (CF® 488) (Blue). Isotype Control (Red).