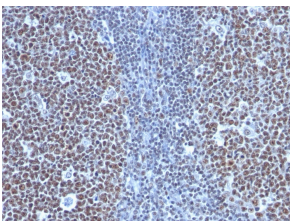


Anti-Cyclin B1 Antibody [SPM619] - BSA and Azide free (A253641)

Specifications:

| | |
|------------------------|---|
| Name: | Anti-Cyclin B1 Antibody [SPM619] - BSA and Azide free |
| Description: | Mouse monoclonal [SPM619] antibody to Cyclin B1. |
| Applications: | Flow Cytometry, IF, IHC-P |
| Recommended Dilutions: | Flow Cytometry: 1-2 µg/million cells, IF: 1-2 µg/ml, IHC-P: 1-2 µg/ml |
| Reactivity: | Human, Mouse |
| Immunogen: | Recombinant full-length human CCNB1 protein. |
| Host: | Mouse |
| Clonality: | Monoclonal |
| Clone ID: | SPM619 |
| Isotype: | IgG1 |
| Light Chains: | kappa |
| Conjugate: | Unconjugated |
| Purification: | Protein A/G chromatography. |
| Concentration: | 1 mg/ml |
| Product Form: | Liquid |
| Formulation: | Supplied in 10mM Phosphate Buffered Saline; without Sodium Azide and carrier free. |
| Storage: | Shipped at 4°C. Upon delivery aliquot and store at -20°C. Avoid freeze / thaw cycles. |
| General Notes: | This monoclonal antibody is also available in a different formulation with BSA and Sodium Azide - Anti-Cyclin B1 Antibody [SPM619] (A250461). |
| Disclaimer: | This product is for research use only. It is not intended for diagnostic or therapeutic use. |

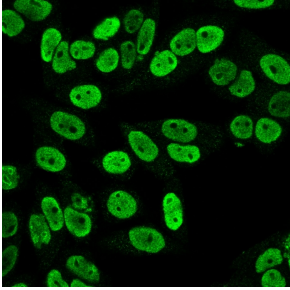
Images:



Immunohistochemical analysis of formalin-fixed, paraffin-embedded human tonsil using Anti-Cyclin B1 Antibody [SPM619].

Anti-Cyclin B1 Antibody [SPM619] - BSA and Azide free (A253641)

Images continued:



Immunofluorescent analysis of PFA fixed HeLa cells stained with Anti-Cyclin B1 Antibody [SPM619] followed by Goat Anti-Mouse IgG (CF® 488) (Green).