

## Anti-CD3 epsilon Antibody [PC3/188A] - BSA and Azide free (A253673)

### Specifications:

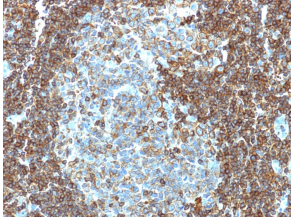
Name:	Anti-CD3 epsilon Antibody [PC3/188A] - BSA and Azide free
Description:	Mouse monoclonal [PC3/188A] antibody to CD3 epsilon.
Specificity:	This antibody recognizes the epsilon-chain of CD3, which consists of five different polypeptide chains (designated as gamma, delta, epsilon, zeta, and eta) with MW ranging from 16-28kDa. The CD3 complex is closely associated at the lymphocyte cell surface with the T cell antigen receptor (TCR). Reportedly, CD3 complex is involved in signal transduction to the T cell interior following antigen recognition. The CD3 antigen is first detectable in early thymocytes and probably represents one of the earliest signs of commitment to the T cell lineage. In cortical thymocytes, CD3 is predominantly intra-cytoplasmic. However, in medullary thymocytes, it appears on the T cell surface. CD3 antigen is a highly specific marker for T cells, and is present in majority of T cell neoplasms.
Applications:	Flow Cytometry, IF, WB
Recommended Dilutions:	Flow Cytometry: 1-2 µg/million cells, IF: 1-2 µg/ml, WB: 1-2 µg/ml
Reactivity:	Human, Rat, Guinea Pig, Rabbit, Porcine, Horse, Bovine, Chicken
Immunogen:	Synthetic peptide corresponding to amino acids 156-168 of the cytoplasmic domain of human CD3 epsilon chain.
Host:	Mouse
Clonality:	Monoclonal
Clone ID:	PC3/188A
Isotype:	IgG1
Light Chains:	kappa
Conjugate:	Unconjugated
Purification:	Protein A/G chromatography.
Concentration:	1 mg/ml
Product Form:	Liquid
Formulation:	Supplied in 10mM Phosphate Buffered Saline; without Sodium Azide and carrier free.
Storage:	Shipped at 4°C. Upon delivery aliquot and store at -20°C. Avoid freeze / thaw cycles.
General Notes:	This monoclonal antibody is also available in a different formulation with BSA and Sodium Azide - Anti-CD3 epsilon Antibody [PC3/188A] (A250493).

# Anti-CD3 epsilon Antibody [PC3/188A] - BSA and Azide free (A253673)

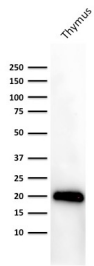
## Specifications continued:

**Disclaimer:** This product is for research use only. It is not intended for diagnostic or therapeutic use.

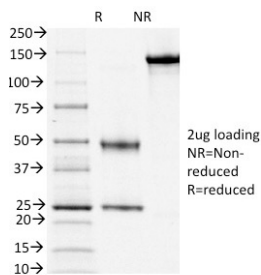
## Images:



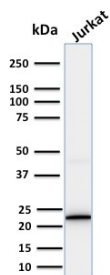
Immunohistochemical analysis of formalin-fixed, paraffin-embedded human tonsil using Anti-CD3 epsilon Antibody [PC3/188A].



Western blot analysis of human thymus tissue lysate using Anti-CD3 epsilon Antibody [PC3/188A].



SDS-PAGE analysis of Anti-CD3 epsilon Antibody [PC3/188A] under non-reduced and reduced conditions; showing intact IgG and intact heavy and light chains, respectively. SDS-PAGE analysis confirms the integrity and purity of the antibody.



Western blot analysis of human Jurkat cell lysate using Anti-CD3 epsilon Antibody [PC3/188A].