

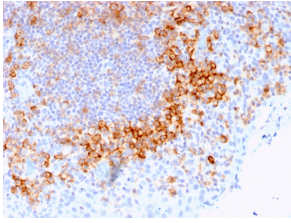
## Anti-CD27 Antibody [LPFS2/1611] - BSA and Azide free (A253799)

### Specifications:

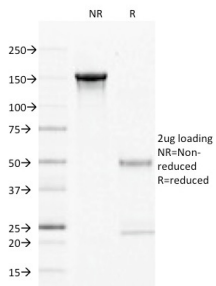
|                        |   |
|------------------------|---|
| Name:                  | Anti-CD27 Antibody [LPFS2/1611] - BSA and Azide free  |
| Description:           | Mouse monoclonal [LPFS2/1611] antibody to CD27.   |
| Specificity:           | This antibody recognizes a protein of a disulfide-linked 120kDa dimer, identified as CD27. It is expressed on the majority of peripheral T cells, medullary thymocytes, memory-type B cells, and natural killer cells. It is a transmembrane phosphoglycoprotein that belongs to the tumor necrosis factor receptor (TNFR) superfamily. CD27 binds to its ligand CD70, a member of the TNF family, and induces T-cell co-stimulation and B-cell activation. It also interacts with TRAFs and is involved in activation of NFB and SAPK/JNK and induces apoptosis. |
| Applications:          | ELISA, Flow Cytometry, IF, IHC-P  |
| Recommended Dilutions: | Flow Cytometry: 1-2 µg/million cells, IF: 1-2 µg/ml, IHC-P: 1-2 µg/ml   |
| Reactivity:            | Human   |
| Immunogen:             | Recombinant full-length human CD27 protein.   |
| Host:                  | Mouse   |
| Clonality:             | Monoclonal  |
| Clone ID:              | LPFS2/1611  |
| Isotype:               | IgG1  |
| Light Chains:          | kappa   |
| Conjugate:             | Unconjugated  |
| Purification:          | Protein A/G chromatography.   |
| Concentration:         | 1 mg/ml   |
| Product Form:          | Liquid  |
| Formulation:           | Supplied in 10mM Phosphate Buffered Saline; without Sodium Azide and carrier free.  |
| Storage:               | Shipped at 4°C. Upon delivery aliquot and store at -20°C. Avoid freeze / thaw cycles.   |
| General Notes:         | This monoclonal antibody is also available in a different formulation with BSA and Sodium Azide - Anti-CD27 Antibody [LPFS2/1611] (A250619).  |
| Disclaimer:            | This product is for research use only. It is not intended for diagnostic or therapeutic use.  |

## Anti-CD27 Antibody [LPFS2/1611] - BSA and Azide free (A253799)

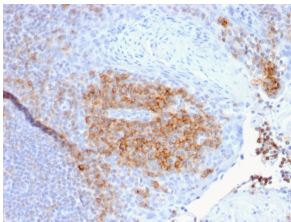
### Images:



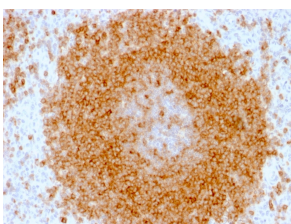
Immunohistochemical analysis of formalin-fixed, paraffin-embedded human tonsil using Anti-CD27 Antibody [LPFS2/1611].



SDS-PAGE analysis of Anti-CD27 Antibody [LPFS2/1611] under non-reduced and reduced conditions; showing intact IgG and intact heavy and light chains, respectively. SDS-PAGE analysis confirms the integrity and purity of the antibody.



Immunohistochemical analysis of formalin-fixed, paraffin-embedded human tonsil using Anti-CD27 Antibody [LPFS2/1611].



Immunohistochemical analysis of formalin-fixed, paraffin-embedded human spleen using Anti-CD27 Antibody [LPFS2/1611].