

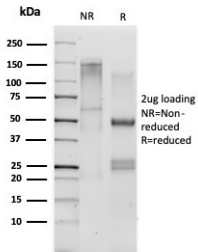
Anti-CD33 Antibody [SIGLEC3/3600] - BSA and Azide free (A253838)

Specifications:

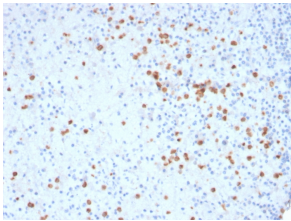
Name:	Anti-CD33 Antibody [SIGLEC3/3600] - BSA and Azide free
Description:	Mouse monoclonal [SIGLEC3/3600] antibody to CD33.
Applications:	IHC-P
Recommended Dilutions:	IHC-P: 1-2 µg/ml
Reactivity:	Human
Immunogen:	Recombinant fragment, around amino acids 51-224, of human CD33 protein. The exact sequence is proprietary.
Host:	Mouse
Clonality:	Monoclonal
Clone ID:	SIGLEC3/3600
Isotype:	IgG2c
Light Chains:	kappa
Conjugate:	Unconjugated
Purification:	Protein A/G chromatography.
Concentration:	1 mg/ml
Product Form:	Liquid
Formulation:	Supplied in 10mM Phosphate Buffered Saline; without Sodium Azide and carrier free.
Storage:	Shipped at 4°C. Upon delivery aliquot and store at -20°C. Avoid freeze / thaw cycles.
General Notes:	This monoclonal antibody is also available in a different formulation with BSA and Sodium Azide - Anti-CD33 Antibody [SIGLEC3/3600] (A250658).
Disclaimer:	This product is for research use only. It is not intended for diagnostic or therapeutic use.

Anti-CD33 Antibody [SIGLEC3/3600] - BSA and Azide free (A253838)

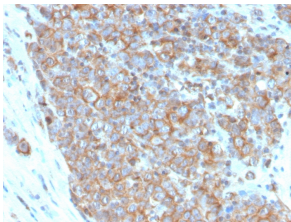
Images:



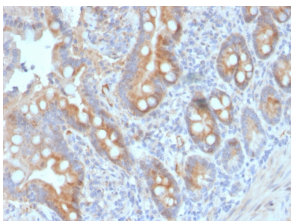
SDS-PAGE analysis of Anti-CD33 Antibody [SIGLEC3/3600] under non-reduced and reduced conditions; showing intact IgG and intact heavy and light chains, respectively. SDS-PAGE analysis confirms the integrity and purity of the antibody.



Immunohistochemical analysis of formalin-fixed, paraffin-embedded human spleen using Anti-CD33 Antibody [SIGLEC3/3600].



Immunohistochemical analysis of formalin-fixed, paraffin-embedded human urothelial carcinoma using Anti-CD33 Antibody [SIGLEC3/3600].



Immunohistochemical analysis of formalin-fixed, paraffin-embedded human colon carcinoma using Anti-CD33 Antibody [SIGLEC3/3600].