

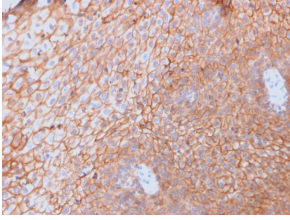
Anti-CD40L Antibody [CD40LG/2761] - BSA and Azide free (A253882)

Specifications:

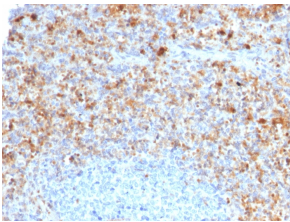
Name:	Anti-CD40L Antibody [CD40LG/2761] - BSA and Azide free
Description:	Mouse monoclonal [CD40LG/2761] antibody to CD40L.
Applications:	ELISA, Flow Cytometry, IF, IHC-P
Recommended Dilutions:	Flow Cytometry: 1-2 µg/million cells, IF: 1-2 µg/ml, IHC-P: 1-2 µg/ml
Reactivity:	Human
Immunogen:	Recombinant fragment, around amino acids 108-261, of human CD40LG protein. The exact sequence is proprietary.
Host:	Mouse
Clonality:	Monoclonal
Clone ID:	CD40LG/2761
Isotype:	IgG2b
Light Chains:	kappa
Conjugate:	Unconjugated
Purification:	Protein A/G chromatography.
Concentration:	1 mg/ml
Product Form:	Liquid
Formulation:	Supplied in 10mM Phosphate Buffered Saline; without Sodium Azide and carrier free.
Storage:	Shipped at 4°C. Upon delivery aliquot and store at -20°C. Avoid freeze / thaw cycles.
General Notes:	This monoclonal antibody is also available in a different formulation with BSA and Sodium Azide - Anti-CD40L Antibody [CD40LG/2761] (A250702).
Disclaimer:	This product is for research use only. It is not intended for diagnostic or therapeutic use.

Anti-CD40L Antibody [CD40LG/2761] - BSA and Azide free (A253882)

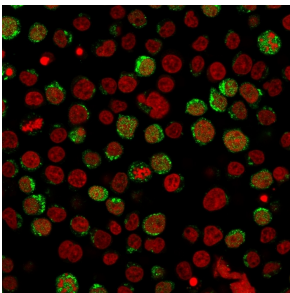
Images:



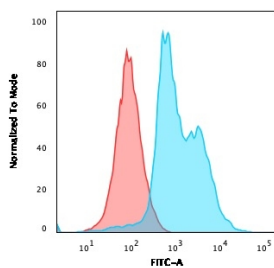
Immunohistochemical analysis of formalin-fixed, paraffin-embedded human spleen using Anti-CD40L Antibody [CD40LG/2761].



Immunohistochemical analysis of formalin-fixed, paraffin-embedded human spleen using Anti-CD40L Antibody [CD40LG/2761].



Immunofluorescent analysis of paraformaldehyde fixed Jurkat cells stained with Anti-CD40L Antibody [CD40LG/2761] followed by Goat Anti-Mouse IgG (CF@ 488) (Green). Nuclei are stained with RedDot.



Flow cytometric analysis of Jurkat cells using Anti-CD40L Antibody [CD40LG/2761] followed by Goat Anti-Mouse IgG (CF@ 488) (Blue). Isotype Control (Red).