

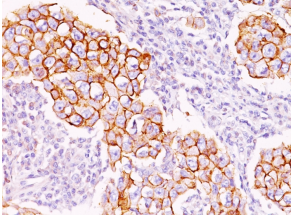
Anti-Phosphotyrosine Antibody [PY20] - BSA and Azide free (A254038)

Specifications:

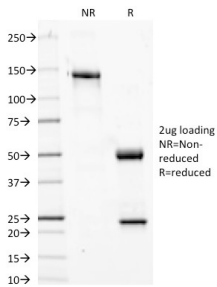
Name:	Anti-Phosphotyrosine Antibody [PY20] - BSA and Azide free
Description:	Mouse monoclonal [PY20] antibody to Phosphotyrosine.
Specificity:	This antibody shows no cross-reactivity with other phosphoamino acids.
Applications:	Flow Cytometry, IF, WB, IP, IHC-P
Recommended Dilutions:	Flow Cytometry: 1-2 µg/million cells, IF: 1-2 µg/ml, WB: 1-2 µg/ml, IP: 1-2 µg / 500 µg protein, IHC-P: 1-2 µg/ml
Immunogen:	Phosphotyrosine conjugated to KLH.
Host:	Mouse
Clonality:	Monoclonal
Clone ID:	PY20
Isotype:	IgG2b
Light Chains:	kappa
Conjugate:	Unconjugated
Purification:	Protein A/G chromatography.
Concentration:	1 mg/ml
Product Form:	Liquid
Formulation:	Supplied in 10mM Phosphate Buffered Saline; without Sodium Azide and carrier free.
Storage:	Shipped at 4°C. Upon delivery aliquot and store at -20°C. Avoid freeze / thaw cycles.
General Notes:	This monoclonal antibody is also available in a different formulation with BSA and Sodium Azide - Anti-Phosphotyrosine Antibody [PY20] (A250858).
Disclaimer:	This product is for research use only. It is not intended for diagnostic or therapeutic use.

Anti-Phosphotyrosine Antibody [PY20] - BSA and Azide free (A254038)

Images:



Immunohistochemical analysis of formalin-fixed, paraffin-embedded human breast carcinoma using Anti-Phosphotyrosine Antibody [PY20].



SDS-PAGE analysis of Anti-Phosphotyrosine Antibody [PY20] under non-reduced and reduced conditions; showing intact IgG and intact heavy and light chains, respectively. SDS-PAGE analysis confirms the integrity and purity of the antibody.