

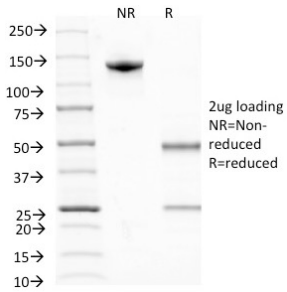
Anti-BrdU Antibody [MoBu-1] - BSA and Azide free (A254158)

Specifications:

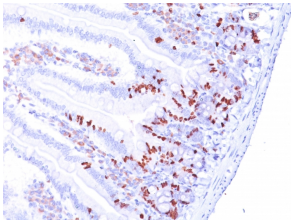
Name:	Anti-BrdU Antibody [MoBu-1] - BSA and Azide free
Description:	Mouse monoclonal [MoBu-1] antibody to BrdU.
Specificity:	This antibody reacts with Bromodeoxyuridine in single stranded DNA (produced by partial denaturation of double stranded DNA), BrdU coupled to a protein carrier, as well as free BrdU. This antibody is helpful in detecting S-phase cells, providing useful information on the aggressiveness of tumors.
Applications:	Flow Cytometry, IF, IHC-P
Recommended Dilutions:	Flow Cytometry: 1-2 µg/million cells, IF: 1-2 µg/ml, IHC-P: 1-2 µg/ml
Immunogen:	Bromodeoxyuridine conjugated to hemocyanine (isolated from <i>Helix pomatia</i>).
Host:	Mouse
Clonality:	Monoclonal
Clone ID:	MoBu-1
Isotype:	IgG1
Light Chains:	kappa
Conjugate:	Unconjugated
Purification:	Protein A/G chromatography.
Concentration:	1 mg/ml
Product Form:	Liquid
Formulation:	Supplied in 10mM Phosphate Buffered Saline; without Sodium Azide and carrier free.
Storage:	Shipped at 4°C. Upon delivery aliquot and store at -20°C. Avoid freeze / thaw cycles.
General Notes:	This monoclonal antibody is also available in a different formulation with BSA and Sodium Azide - Anti-BrdU Antibody [MoBu-1] (A250978).
Disclaimer:	This product is for research use only. It is not intended for diagnostic or therapeutic use.

Anti-BrdU Antibody [MoBu-1] - BSA and Azide free (A254158)

Images:



SDS-PAGE analysis of Anti-BrdU Antibody [MoBu-1] under non-reduced and reduced conditions; showing intact IgG and intact heavy and light chains, respectively. SDS-PAGE analysis confirms the integrity and purity of the antibody.



Immunohistochemical analysis of formalin-fixed, paraffin-embedded mouse small intestine using Anti-BrdU Antibody [MoBu-1].