

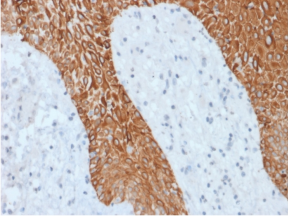
## Anti-pan Cytokeratin Antibody [KRT/1877R] - BSA and Azide free (A254197)

### Specifications:

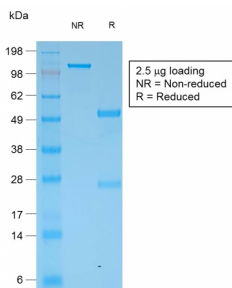
Name:	Anti-pan Cytokeratin Antibody [KRT/1877R] - BSA and Azide free
Description:	Recombinant rabbit monoclonal [KRT/1877R] antibody to pan Cytokeratin.
Specificity:	Twenty human keratins are resolved with two-dimensional gel electrophoresis into acidic (pI 6.0) subfamilies. This antibody recognizes acidic (Type I or LMW) and basic (Type II or HMW) cytokeratins, including 59kDa (CK4); 58kDa (CK5); 56kDa (CK6); 52kDa (CK8); 56.5kDa (CK10); 53kDa (CK13) and 45kDa (CK18). This is a broad-spectrum antibody, which has been reported to differentiate epithelial tumors from non-epithelial tumors. Many studies have shown the usefulness of keratins as markers in cancer research and tumor diagnosis.
Applications:	Flow Cytometry, IF, WB, IHC-P
Recommended Dilutions:	Flow Cytometry: 1-2 µg/million cells, IF: 1-2 µg/ml, WB: 1-2 µg/ml, IHC-P: 1-2 µg/ml
Reactivity:	Human, Monkey, Bovine, Porcine, Goat, Rat, Mouse, Guinea Pig, Frog
Immunogen:	Keratin-enriched preparation from cultured human epithelial cells.
Host:	Rabbit
Clonality:	Monoclonal
Clone ID:	KRT/1877R
Isotype:	IgG
Conjugate:	Unconjugated
Purification:	Protein A/G chromatography.
Concentration:	1 mg/ml
Product Form:	Liquid
Formulation:	Supplied in 10mM Phosphate Buffered Saline; without Sodium Azide and carrier free.
Storage:	Shipped at 4°C. Upon delivery aliquot and store at -20°C. Avoid freeze / thaw cycles.
General Notes:	This monoclonal antibody is also available in a different formulation with BSA and Sodium Azide - Anti-pan Cytokeratin Antibody [KRT/1877R] (A251018).
Disclaimer:	This product is for research use only. It is not intended for diagnostic or therapeutic use.

## Anti-pan Cytokeratin Antibody [KRT/1877R] - BSA and Azide free (A254197)

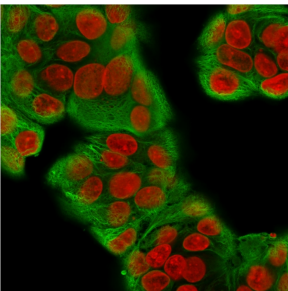
### Images:



Immunohistochemical analysis of formalin-fixed, paraffin-embedded human skin using Anti-pan Cytokeratin Antibody [KRT/1877R].



SDS-PAGE analysis of Anti-pan Cytokeratin Antibody [KRT/1877R] under non-reduced and reduced conditions; showing intact IgG and intact heavy and light chains, respectively. SDS-PAGE analysis confirms the integrity and purity of the antibody.



Immunofluorescent analysis of methanol fixed MCF-7 cells stained with Anti-pan Cytokeratin Antibody [KRT/1877R] followed by Goat Anti-Mouse IgG (CF® 488) (Green). The nuclear counterstain is RedDot (Red).