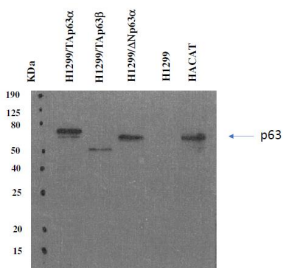


## Anti-p63 Antibody [PANp63-6.1] (A254416)

### Specifications:

Name:	Anti-p63 Antibody [PANp63-6.1]
Description:	Mouse monoclonal [PANp63-6.1] antibody to p63.
Specificity:	This antibody recognizes both TA p63 and delta N p63 form of p63. The target epitope PSHLIR is located within amino acids 261-266 of TA p63 and 167-172 of delta N p63.
Applications:	WB, IHC-P, ICC, IP
Recommended Dilutions:	WB: 1 µg/ml
Reactivity:	Mouse, Rat, Human
Immunogen:	Recombinant full-length human p63 protein.
Host:	Mouse
Clonality:	Monoclonal
Clone ID:	PANp63-6.1
Isotype:	IgG1
Conjugate:	Unconjugated
Purification:	Protein A chromatography.
Concentration:	1 mg/ml
Product Form:	Liquid
Formulation:	Supplied in Phosphate Buffered Saline with 15 mM Sodium Azide.
Storage:	Shipped at 4°C. Upon delivery aliquot and store at -20°C. Avoid freeze / thaw cycles.
Disclaimer:	This product is for research use only. It is not intended for diagnostic or therapeutic use.

### Images:



Western blot analysis of various p63 isoforms using Anti-p63 Antibody [PANp63-6.1]. This antibody detects both TA p63 and delta N p63 isoforms, as demonstrated on particular transfectants.