

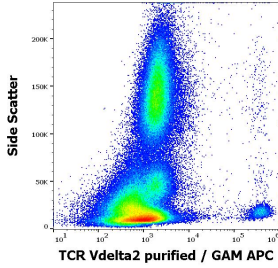
Anti-TCR V delta 2 Antibody [B6] (A254427)

Specifications:

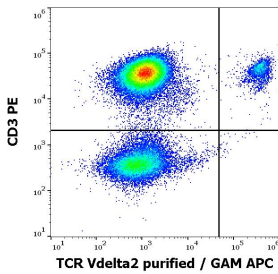
| | |
|------------------------|--|
| Name: | Anti-TCR V delta 2 Antibody [B6] |
| Description: | Mouse monoclonal [B6] antibody to TCR V delta 2 . |
| Specificity: | This antibody recognizes an extracellular epitope of human TCR V delta 2, which is expressed on the majority of gamma/delta T cells. |
| Applications: | Flow Cytometry |
| Recommended Dilutions: | Flow Cytometry: 1-4 µg/ml |
| Reactivity: | Human |
| Immunogen: | Human recombinant TCR V delta 2 protein. |
| Host: | Mouse |
| Clonality: | Monoclonal |
| Clone ID: | B6 |
| Isotype: | IgG1 |
| Light Chains: | kappa |
| Conjugate: | Unconjugated |
| Purification: | Protein A chromatography. |
| Concentration: | 1 mg/ml |
| Product Form: | Liquid |
| Formulation: | Supplied in Phosphate Buffered Saline with 15 mM Sodium Azide. |
| Storage: | Shipped at 4°C. Upon delivery aliquot and store at -20°C. Avoid freeze / thaw cycles. |
| Disclaimer: | This product is for research use only. It is not intended for diagnostic or therapeutic use. |

Anti-TCR V delta 2 Antibody [B6] (A254427)

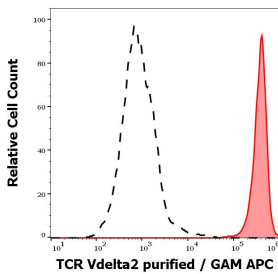
Images:



Flow cytometric analysis of human peripheral whole blood stained with Anti-TCR V delta 2 Antibody [B6] (concentration in sample 0.3µg/ml, GAM-APC).



Flow cytometry multicolor surface staining of human lymphocytes using Anti-TCR V delta 2 Antibody [B6] (concentration in sample 0.3µg/ml, GAM-APC) and Anti-CD3 Antibody [UCHT] (PE) (4µl reagent per 100µl of peripheral whole blood).



Separation of human TCR V delta 2 positive lymphocytes (red-filled) from human TCR V delta 2 negative lymphocytes (black-dashed) in flow cytometry analysis (surface staining) of peripheral whole blood stained with Anti-TCR V delta 2 Antibody [B6] (concentration in sample 0.3µg/ml, GAM-APC).