

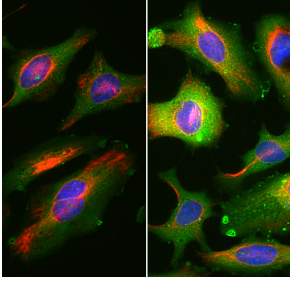
## Anti-Annexin V Antibody [6A12] (A270559)

### Specifications:

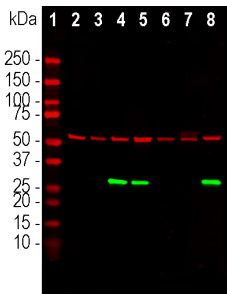
Name:	Anti-Annexin V Antibody [6A12]
Description:	Mouse monoclonal [6A12] antibody to Annexin V.
Specificity:	The antibody is specific for human Annexin A5 and does not recognize Annexin A5 in rodents and many other mammals, however, it does recognize Annexin A5 in COS1 cells which originated from African green monkey.
Applications:	WB, ICC/IF
Recommended Dilutions:	WB: 1:2,000-1:5,000, ICC/IF: 1:1,000-1:2,000
Reactivity:	Human, Monkey
Immunogen:	Recombinant full-length human Annexin A5, expressed in and purified from E. coli.
Host:	Mouse
Clonality:	Monoclonal
Clone ID:	6A12
Isotype:	IgG1
Conjugate:	Unconjugated
Purification:	Immunogen affinity purification.
Concentration:	1 mg/ml
Molecular Weight:	35 kDa
Product Form:	Liquid
Formulation:	Supplied in Phosphate Buffered Saline with 50% Glycerol and 5mM Sodium Azide.
Storage:	Shipped at 4°C. Upon delivery aliquot and store at -20°C. Avoid freeze / thaw cycles.
Disclaimer:	This product is for research use only. It is not intended for diagnostic or therapeutic use.

## Anti-Annexin V Antibody [6A12] (A270559)

### Images:



Immunofluorescent analysis of HeLa cells stained using Anti-Annexin V Antibody [6A12] (A270559), at a dilution of 1:1,000, in green. The tissue was co-stained using Anti-Vimentin Antibody (A85421), at a dilution of 1:2,000, in red. Nuclear DNA is visualised in blue using Hoechst staining. HeLa cells were grown under normal conditions, on the left, or treated with 15mM Pentoxifyline for 24 hours, on the right. Pentoxifyline activates apoptosis in these cells and also upregulates Annexin A6 expression.



Western blot analysis of different cell line lysates using Anti-Annexin V Antibody [6A12] (A270559), at a dilution of 1:2,000, in green. The lanes contain samples of: [1] Protein standards, in red, [2] mouse NIH-3T3, [3] rat C6, [4] human HeLa, [5] human HEK293, [6] canine A72, [7] equine NBL6, and [8] African green monkey COS1 cells. The blot was simultaneously probed with Anti-Heat Shock Protein 60 Antibody (A85437), at a dilution of 1:5,000, in red. The strong band at about 35kDa corresponds to Annexin V protein, detected only in the human and monkey cells, as the antibody does not recognise Annexin V from other species. The Anti-Heat Shock Protein 60 Antibody (A85437) used as a loading control reveals a single band at 60kDa in all cell preparations.