

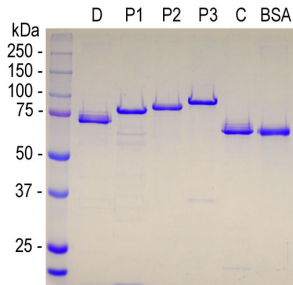
Recombinant Human MAP2C Protein (A270571)

Specifications:

Name:	Recombinant Human MAP2C Protein
Applications:	SDS-PAGE, ELISA
Nature:	Recombinant
Protein Species:	Human
Protein Length:	Full length protein.
Sequence:	MADERKDEAKAPHWTSAPL TEASAHSHPPEIKDQGGAGEGLVRSANGFPYREDEEGAF GEHGSQGTYSNTKENGINGELTSADRETAEVVSARIVQVVTAEAVAVLKGEQEKEAQH KDQTAALPLAAEETANLPPSPPPSPASEQTVTVVEEAAGGESALAPSVFKQAKDKVSDG VTKSPEKRSSLPRPSSILPPRRGVSGDRDENFSLNSSISSSARRTTRSEPIRRAGKS GTSTPTTPGSTAITPGTPPSYSSRTPGTPGTPSYPRTPHTPGTPKSAILVPSEKKVAI IRTPPKSPATPKQLRLINQPLPDLKINVKSKIGSTDNIKYQPKGGQVQIVTKKIDLSHV TSKCGSLKNIRHRPGGGRVKIESVKLDFKEKAQAKVGLDNAHHVPGGGNVKIDSQKL NFRHAKARVDHGAEIITQSPGRSSVASPRRLSNVSSSGSINLLESPQLATLAEDVTA ALAKQGL
Tag:	His Tag (C-terminus)
Molecular Weight:	65-75 kDa (by SDS-PAGE)
Product Form:	Liquid
Concentration:	1 mg/ml
Formulation:	Supplied in 6 M Urea.
Disclaimer:	This product is for research use only. It is not intended for diagnostic or therapeutic use.

Recombinant Human MAP2C Protein (A270571)

Images:



Coomassie brilliant blue stained SDS-PAGE of Recombinant Human MAP2C Protein (A270571) and other purified recombinant Human MAP2 protein forms. The lanes contain samples of: [1] Protein standards, [D] 2 μ g of Recombinant Human MAP2D Protein (A270572), [P1] 2 μ g of Recombinant Human MAP2 Projection P1 Protein (A270588), [P2] 2 μ g of Recombinant Human MAP2 Projection P2 Protein (A270589), [P3] 2 μ g of Recombinant Human MAP2 Projection P3 Protein (A270590), [C] 2 μ g of Recombinant Human MAP2C Protein (A270571), and [BSA] 2 μ g of BSA. All of the constructs run more slowly on SDS-PAGE than expected from their molecular size, probably due to their high content of charged amino acids.