

Anti-Placental Alkaline Phosphatase Antibody [rALP/870] (A277617)

Specifications:

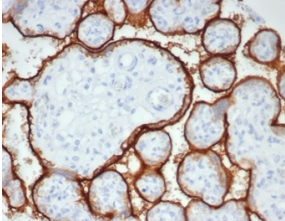
Name:	Anti-Placental Alkaline Phosphatase Antibody [rALP/870]
Description:	Mouse monoclonal [rALP/870] antibody to Placental Alkaline Phosphatase.
Specificity:	This antibody recognizes a 70kDa membrane-bound isozyme (Regan and Nagao type) of Placental Alkaline Phosphatase (PLAP) occurring in the placenta during the 3rd trimester of gestation. It is highly specific for PLAP and shows no cross-reaction with other isozymes of alkaline phosphatase. Anti-PLAP This antibody recognizes germ cell tumors and can discriminate between these and other neoplasms. Somatic neoplasms e.g. breast, gastrointestinal, prostatic, and urinary cancers may also immunoreact with antibodies to PLAP. Anti-PLAP positivity in conjunction with anti-keratin negativity favors seminoma over carcinoma. Germ cell tumors are usually anti-keratin positive, but they regularly fail to stain with anti-EMA, whereas most carcinomas stain with anti-EMA. Anti-PLAP has been useful in the diagnosis of gestational trophoblastic disease.
Applications:	WB, IHC-P
Recommended Dilutions:	WB: 1-2 µg/ml, IHC-P: 1-2 µg/ml
Reactivity:	Human
Immunogen:	Recombinant full-length human ALPP protein.
Host:	Mouse
Clonality:	Monoclonal
Clone ID:	rALP/870
Isotype:	IgG1
Light Chains:	kappa
Conjugate:	Unconjugated
Purification:	Protein A/G chromatography.
Concentration:	200 µg/ml
Product Form:	Liquid
Formulation:	Supplied in 10mM Phosphate Buffered Saline with 0.05% BSA and 0.05% Sodium Azide.
Storage:	Shipped at 4°C. Upon delivery aliquot and store at -20°C. Avoid freeze / thaw cycles.
General Notes:	This monoclonal antibody is also available in a different formulation without BSA and Sodium Azide - Anti-Placental Alkaline Phosphatase Antibody [rALP/870] - BSA and Azide free (A278205).

Anti-Placental Alkaline Phosphatase Antibody [rALP/870] (A277617)

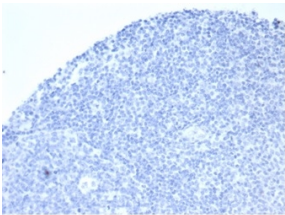
Specifications continued:

Disclaimer: This product is for research use only. It is not intended for diagnostic or therapeutic use.

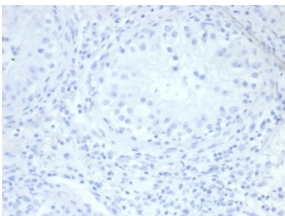
Images:



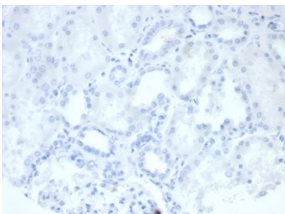
Immunohistochemical analysis of formalin-fixed, paraffin-embedded human placenta using Anti-Placental Alkaline Phosphatase Antibody [rALP/870] at 2 μ g/ml in PBS for 30 minutes at room temperature.



Negative Tissue Control: Immunohistochemical analysis of formalin-fixed, paraffin-embedded human tonsil using Anti-Placental Alkaline Phosphatase Antibody [rALP/870] at 2 μ g/ml in PBS for 30 minutes at room temperature.



Negative Tissue Control: Immunohistochemical analysis of formalin-fixed, paraffin-embedded human testis using Anti-Placental Alkaline Phosphatase Antibody [rALP/870] at 2 μ g/ml in PBS for 30 minutes at room temperature.



Negative Tissue Control: Immunohistochemical analysis of formalin-fixed, paraffin-embedded human kidney using Anti-Placental Alkaline Phosphatase Antibody [rALP/870] at 2 μ g/ml in PBS for 30 minutes at room temperature.