

Anti-Lactoferrin Antibody [LTF/4079] (A277696)

Specifications:

Name:	Anti-Lactoferrin Antibody [LTF/4079]
Description:	Mouse monoclonal [LTF/4079] antibody to Lactoferrin.
Specificity:	Ferritin and transferrins manage necessary iron-binding functions for iron metabolism. Transferrins comprise a class of single-chain, two-sited, metal-binding proteins expressed throughout the fluid and cells of vertebrates. The three major types of transferrin include serotransferrin, lactotransferrin (lactoferrin) and ovotransferrin. Lactoferrin is found in milk, tears and leukocytes. It degrades an IgA1 protease secreted by Haemophilus influenzae and, consequently, allows the human IgA1 antibody to effectively abolish Haemophilus influenzae colonization. Lactoferrin also attenuates the pathogenic potential of Haemophilus influenzae by proteolytic degradation of the Hap adhesin. While lactoferrin may aid in the transmission of human T cell leukemia virus type 1, it inhibits HIV-1 replication at the level of viral fusion and entry into cells. The inhibitory effects of lactoferrin on mixed lymphocyte reactions suggest that it may have the ability to sense the activation status of lymphocytes.
Applications:	Flow Cytometry, IF, IHC-P
Recommended Dilutions:	Flow Cytometry: 1-2 µg/million cells, IF: 1-2 µg/ml, IHC-P: 1-2 µg/ml
Reactivity:	Human
Immunogen:	Recombinant fragment, around amino acids 614-645, of human Lactoferrin protein. The exact sequence is proprietary.
Host:	Mouse
Clonality:	Monoclonal
Clone ID:	LTF/4079
Isotype:	IgG2b
Light Chains:	kappa
Conjugate:	Unconjugated
Purification:	Protein A/G chromatography.
Concentration:	200 µg/ml
Product Form:	Liquid
Formulation:	Supplied in 10mM Phosphate Buffered Saline with 0.05% BSA and 0.05% Sodium Azide.
Storage:	Shipped at 4°C. Upon delivery aliquot and store at -20°C. Avoid freeze / thaw cycles.

Anti-Lactoferrin Antibody [LTF/4079] (A277696)

Specifications continued:

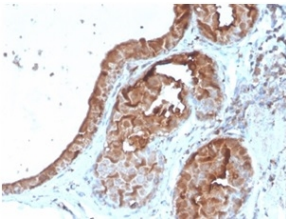
General Notes:

This monoclonal antibody is also available in a different formulation without BSA and Sodium Azide - Anti-Lactoferrin Antibody [LTF/4079] - BSA and Azide free (A278284).

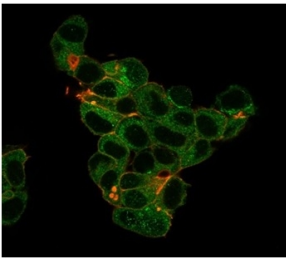
Disclaimer:

This product is for research use only. It is not intended for diagnostic or therapeutic use.

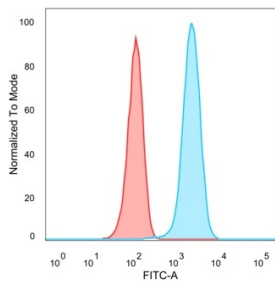
Images:



Immunohistochemical analysis of formalin-fixed, paraffin-embedded human breast tissue using Anti-Lactoferrin Antibody [LTF/4079].



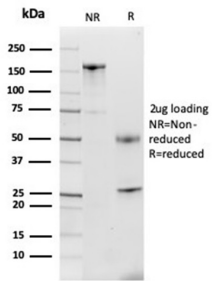
Immunofluorescent analysis of PFA-fixed MCF-7 cells stained with Anti-Lactoferrin Antibody [LTF/4079] followed by Goat Anti-Mouse IgG (CF® 488) (Green). CF® 640A Phalloidin (Red).



Flow cytometric analysis of PFA-fixed MCF-7 cells using Anti-Lactoferrin Antibody [LTF/4079] followed by Goat Anti-Mouse IgG (CF® 488) (Blue). Isotype Control (Red).

Anti-Lactoferrin Antibody [LTF/4079] (A277696)

Images continued:



SDS-PAGE analysis of Anti-Lactoferrin Antibody [LTF/4079] under non-reduced and reduced conditions; showing intact IgG and intact heavy and light chains, respectively. SDS-PAGE analysis confirms the integrity and purity of the antibody.