

## Anti-PBX2 Antibody [PCRP-PBX2-1C4] (A277733)

### Specifications:

Name:	Anti-PBX2 Antibody [PCRP-PBX2-1C4]
Description:	Mouse monoclonal [PCRP-PBX2-1C4] antibody to PBX2.
Specificity:	Pbx 1, 2, 3 and 4 are members of the TALE (three amino acid loop extension) family of homeodomain-containing proteins. Human pre-B cell acute leukemias are frequently associated with a t(1;19)(q23;p13.3) chromosomal rearrangement, which creates a chimeric gene encoding a fusion between the E2A and Pbx 1 gene products. Pbx 2 and Pbx 3 share 92% and 94% respective identities with Pbx 1 over a 266 amino acid region flanking their homeobox domains, while all three proteins are quite divergent at their amino- and carboxy-termini. Two forms of Pbx 1 and Pbx 3 each differ primarily in their carboxy-termini and result from alternative mRNA splicing. Unlike other homeotic selector genes which are expressed transiently during development and differentiation, Pbx gene transcripts are ubiquitously expressed in both fetal and adult tissues and cell lines. Additionally, Pbx 2 and Pbx 3 transcripts are detected in lymphoid cells, which do not express Pbx 1. Pbx 4 expression is confined to the testis, especially to spermatocytes in the pachytene stage of the first meiotic prophase.
Applications:	ELISA, IP, Flow Cytometry, IF
Recommended Dilutions:	IP: 1-2µg / 100-500µg proteins, Flow Cytometry: 1-2 µg/million cells, IF: 1-2 µg/ml
Reactivity:	Human
Immunogen:	Recombinant full-length human PBX2 protein.
Host:	Mouse
Clonality:	Monoclonal
Clone ID:	PCRP-PBX2-1C4
Isotype:	IgG2b
Conjugate:	Unconjugated
Purification:	Protein A/G chromatography.
Concentration:	200 µg/ml
Product Form:	Liquid
Formulation:	Supplied in 10mM Phosphate Buffered Saline with 0.05% BSA and 0.05% Sodium Azide.
Storage:	Shipped at 4°C. Upon delivery aliquot and store at -20°C. Avoid freeze / thaw cycles.

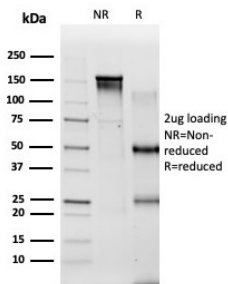
## Anti-PBX2 Antibody [PCRP-PBX2-1C4] (A277733)

### Specifications continued:

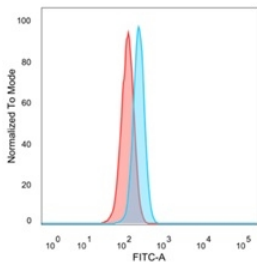
**General Notes:** This monoclonal antibody is also available in a different formulation without BSA and Sodium Azide - Anti-PBX2 Antibody [PCRP-PBX2-1C4] - BSA and Azide free (A278321).

**Disclaimer:** This product is for research use only. It is not intended for diagnostic or therapeutic use.

### Images:



SDS-PAGE analysis of Anti-PBX2 Antibody [PCRP-PBX2-1C4] under non-reduced and reduced conditions; showing intact IgG and intact heavy and light chains, respectively. SDS-PAGE analysis confirms the integrity and purity of the antibody.



Flow cytometric analysis of PFA-fixed HeLa cells using Anti-PBX2 Antibody [PCRP-PBX2-1C4] followed by Goat Anti-Mouse IgG (CF® 488) (Blue). Isotype Control (Red).

## Anti-PBX2 Antibody [PCR-PBX2-1C4] (A277733)

Images continued:



Analysis of protein array containing more than 19,000 full-length human proteins using Anti-PBX2 Antibody [PCR-PBX2-1C4]. Z-Score and S-Score: The Z-score represents the strength of a signal that a monoclonal antibody (MAb) (in combination with a fluorescently-tagged anti-IgG secondary antibody) produces when binding to a particular protein on the HuProt™ array. Z-scores are described in units of standard deviations (SD's) above the mean value of all signals generated on that array. If targets on HuProt™ are arranged in descending order of the Z-score, the S-score is the difference (also in units of SD's) between the Z-score. S-score therefore represents the relative target specificity of a MAb to its intended target; a MAb is considered to be specific to its intended target, if the MAb has an S-score of at least 2.5. For example, if a MAb binds to protein X with a Z-score of 43 and to protein Y with a Z-score of 14, then the S-score for the binding of that MAb to protein X is equal to 29.