

Anti-Surfactant Protein D Antibody [SFTPD/4363] (A277792)

Specifications:

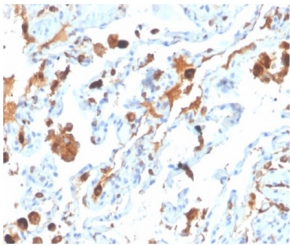
Name:	Anti-Surfactant Protein D Antibody [SFTPD/4363]
Description:	Mouse monoclonal [SFTPD/4363] antibody to Surfactant Protein D.
Specificity:	<p>Pulmonary surfactant is primarily responsible for lowering the surface tension at the air-liquid interface in the alveoli, a process that is essential for normal respiration. Pulmonary surfactant is a mixture of phospholipids and proteins, including four distinct surfactant-associated proteins (SPs), SP-A, SP-B, SP-C, SP-D. SP-B and SP-C are predominantly hydrophobic proteins that associate with lipids to promote the absorption of surfactant phospholipids and to reduce the surface tension in the alveoli. SP-A and SP-D are large multimeric proteins belonging to the family of calcium-dependent lectins, designated Collectins, which contribute to the innate immune system. Both SP-A and SP-D have been shown to protect against microbial challenge through binding to the lipid components of the bacterial cell wall and facilitating the rapid removal of microbials.</p>
Applications:	IHC-P
Recommended Dilutions:	IHC-P: 1-2 µg/ml
Reactivity:	Human
Immunogen:	Recombinant fragment, around amino acids 241-336, of human Surfactant Protein D. The exact sequence is proprietary.
Host:	Mouse
Clonality:	Monoclonal
Clone ID:	SFTPD/4363
Isotype:	IgG2c
Light Chains:	kappa
Conjugate:	Unconjugated
Purification:	Protein A/G chromatography.
Concentration:	200 µg/ml
Product Form:	Liquid
Formulation:	Supplied in 10mM Phosphate Buffered Saline with 0.05% BSA and 0.05% Sodium Azide.
Storage:	Shipped at 4°C. Upon delivery aliquot and store at -20°C. Avoid freeze / thaw cycles.

Anti-Surfactant Protein D Antibody [SFTPD/4363] (A277792)

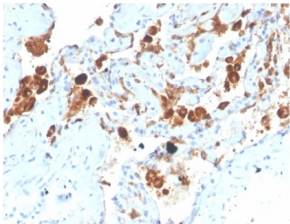
Specifications continued:

General Notes:	This monoclonal antibody is also available in a different formulation without BSA and Sodium Azide - Anti-Surfactant Protein D Antibody [SFTPD/4363] - BSA and Azide free (A278380).
Disclaimer:	This product is for research use only. It is not intended for diagnostic or therapeutic use.

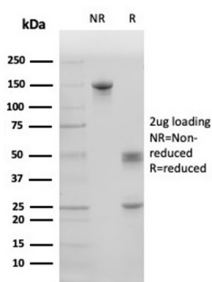
Images:



Immunohistochemical analysis of formalin-fixed, paraffin-embedded human lung tissue using Anti-Surfactant Protein D Antibody [SFTPD/4363].



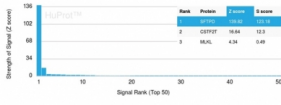
Immunohistochemical analysis of formalin-fixed, paraffin-embedded human lung tissue using Anti-Surfactant Protein D Antibody [SFTPD/4363].



SDS-PAGE analysis of Anti-Surfactant Protein D Antibody [SFTPD/4363] under non-reduced and reduced conditions; showing intact IgG and intact heavy and light chains, respectively. SDS-PAGE analysis confirms the integrity and purity of the antibody.

Anti-Surfactant Protein D Antibody [SFTPD/4363] (A277792)

Images continued:



Analysis of protein array containing more than 19,000 full-length human proteins using Anti-Surfactant Protein D Antibody [SFTPD/4363]. Z-Score and S- Score: The Z-score represents the strength of a signal that a monoclonal antibody (MAb) (in combination with a fluorescently-tagged anti-IgG secondary antibody) produces when binding to a particular protein on the HuProt™ array. Z-scores are described in units of standard deviations (SD's) above the mean value of all signals generated on that array. If targets on HuProt™ are arranged in descending order of the Z-score, the S-score is the difference (also in units of SD's) between the Z-score. S-score therefore represents the relative target specificity of a MAb to its intended target; a MAb is considered to be specific to its intended target, if the MAb has an S-score of at least 2.5. For example, if a MAb binds to protein X with a Z-score of 43 and to protein Y with a Z-score of 14, then the S-score for the binding of that MAb to protein X is equal to 29.