

Anti-Ku80 Antibody [XRCC5/7315] (A277824)

Specifications:

Name:	Anti-Ku80 Antibody [XRCC5/7315]
Description:	Mouse monoclonal [XRCC5/7315] antibody to Ku80.
Specificity:	The Ku protein is localized in the nucleus and is composed of subunits referred to as Ku-70 (or p70) and Ku-86 or (p86) which is also known by the synonym Ku-80 or (p80). Ku was first described as an autoantigen to which antibodies were produced in a patient with scleroderma-polymyositis overlap syndrome, and was later found in the sera of patients with other rheumatic diseases. Ku has several functions, including cell signaling, DNA replication and transcriptional activation. Ku is involved in Pol II-directed transcription by virtue of its DNA binding activity; serving as the regulatory component of the DNA-associated protein kinase that phosphorylates Pol II and transcription factor Sp. Ku proteins also activate transcription from the U1 small nuclear RNA and the human transferrin receptor gene promoters.
Applications:	WB, IHC-P
Recommended Dilutions:	WB: 1-2 µg/ml, IHC-P: 1-2 µg/ml
Reactivity:	Human
Immunogen:	Recombinant fragment, around amino acids 300-500, of human Ku80 protein. The exact sequence is proprietary.
Host:	Mouse
Clonality:	Monoclonal
Clone ID:	XRCC5/7315
Isotype:	IgG1
Light Chains:	kappa
Conjugate:	Unconjugated
Purification:	Protein A/G chromatography.
Concentration:	200 µg/ml
Product Form:	Liquid
Formulation:	Supplied in 10mM Phosphate Buffered Saline with 0.05% BSA and 0.05% Sodium Azide.
Storage:	Shipped at 4°C. Upon delivery aliquot and store at -20°C. Avoid freeze / thaw cycles.
General Notes:	This monoclonal antibody is also available in a different formulation without BSA and Sodium Azide - Anti-Ku80 Antibody [XRCC5/7315] - BSA and Azide free (A278412).

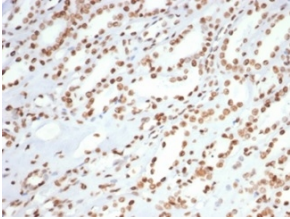
Anti-Ku80 Antibody [XRCC5/7315] (A277824)

Specifications continued:

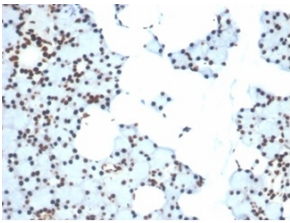
Disclaimer:

This product is for research use only. It is not intended for diagnostic or therapeutic use.

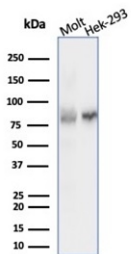
Images:



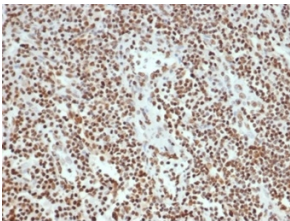
Immunohistochemical analysis of formalin-fixed, paraffin-embedded human colon carcinoma tissue using Anti-Ku80 Antibody [XRCC5/7315].



Immunohistochemical analysis of formalin-fixed, paraffin-embedded human salivary gland tissue using Anti-Ku80 Antibody [XRCC5/7315].



Western blot analysis of (Lane 1) MOLT-4 cell line lysate and (Lane 2) HEK293 cell line lysate using Anti-Ku80 Antibody [XRCC5/7315].



Immunohistochemical analysis of formalin-fixed, paraffin-embedded human lymph node tissue using Anti-Ku80 Antibody [XRCC5/7315].