

Anti-Granzyme B Antibody [rGZMB/4538] (A277892)

Specifications:

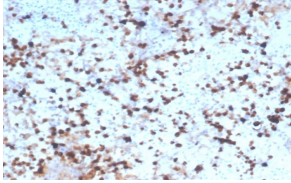
Name:	Anti-Granzyme B Antibody [rGZMB/4538]
Description:	Recombinant mouse monoclonal [rGZMB/4538] antibody to Granzyme B.
Specificity:	Granzyme B is a member of the granule serine protease family stored specifically in NK cells or cytotoxic T cells. Cytolytic T lymphocytes (CTL) and natural killer (NK) cells share the ability to recognize, bind, and lyse specific target cells. They are thought to protect their host by lysing cells bearing on their surface 'nonself' antigens, usually peptides or proteins resulting from infection by intracellular pathogens. Granzyme B is crucial for the rapid induction of target cell apoptosis by CTLs in the cell-mediated immune response. Granzyme B is useful as a marker in the identification of NK/T-cell lymphomas. High percentages of cytotoxic T-cells have been shown to be an unfavorable prognostic indicator in Hodgkin s Disease.
Applications:	WB, IHC-P
Recommended Dilutions:	WB: 1-2 µg/ml, IHC-P: 1-2 µg/ml
Reactivity:	Human
Immunogen:	Recombinant fragment, around amino acids 73-187, of human Granzyme B protein. The exact sequence is proprietary.
Host:	Mouse
Clonality:	Monoclonal
Clone ID:	rGZMB/4538
Isotype:	IgG2a
Light Chains:	kappa
Conjugate:	Unconjugated
Purification:	Protein A/G chromatography.
Concentration:	200 µg/ml
Product Form:	Liquid
Formulation:	Supplied in 10mM Phosphate Buffered Saline with 0.05% BSA and 0.05% Sodium Azide.
Storage:	Shipped at 4°C. Upon delivery aliquot and store at -20°C. Avoid freeze / thaw cycles.
General Notes:	This monoclonal antibody is also available in a different formulation without BSA and Sodium Azide - Anti-Granzyme B Antibody [rGZMB/4538] - BSA and Azide free (A278480).

Anti-Granzyme B Antibody [rGZMB/4538] (A277892)

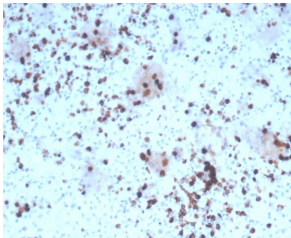
Specifications continued:

Disclaimer: This product is for research use only. It is not intended for diagnostic or therapeutic use.

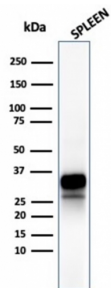
Images:



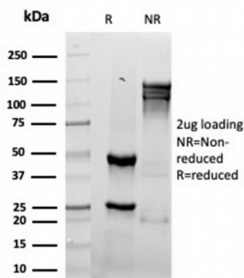
Immunohistochemical analysis of formalin-fixed, paraffin-embedded human spleen tissue using Anti-Granzyme B Antibody [rGZMB/4538].



Immunohistochemical analysis of formalin-fixed, paraffin-embedded human tonsil tissue using Anti-Granzyme B Antibody [rGZMB/4538].



Western blot analysis of human spleen tissue lysate using Anti-Granzyme B Antibody [rGZMB/4538].



SDS-PAGE analysis of Anti-Granzyme B Antibody [rGZMB/4538] under non-reduced and reduced conditions; showing intact IgG and intact heavy and light chains, respectively. SDS-PAGE analysis confirms the integrity and purity of the antibody.