

Anti-CD3 epsilon Antibody [C3e/4652R] (A278087)

Specifications:

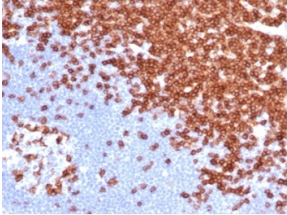
Name:	Anti-CD3 epsilon Antibody [C3e/4652R]
Description:	Recombinant rabbit monoclonal [C3e/4652R] antibody to CD3 epsilon.
Specificity:	This antibody recognizes the epsilon-chain of CD3, which consists of five different polypeptide chains (designated as gamma, delta, epsilon, zeta, and eta) with MW ranging from 16-28kDa. The CD3 complex is closely associated at the lymphocyte cell surface with the T cell antigen receptor (TCR). Reportedly, CD3 complex is involved in signal transduction to the T cell interior following antigen recognition. The CD3 antigen is first detectable in early thymocytes and probably represents one of the earliest signs of commitment to the T cell lineage. In cortical thymocytes, CD3 is predominantly intra-cytoplasmic. However, in medullary thymocytes, it appears on the T cell surface. CD3 antigen is a highly specific marker for T cells, and is present in majority of T cell neoplasms.
Applications:	ELISA, WB, IHC-P
Recommended Dilutions:	WB: 1-2 µg/ml, IHC-P: 1-2 µg/ml
Reactivity:	Human
Cross Reactivity:	This antibody does not cross react with Feline or Canine.
Immunogen:	Synthetic peptide, around amino acids 20-40, of human CD3 epsilon. The exact sequence is proprietary.
Host:	Rabbit
Clonality:	Monoclonal
Clone ID:	C3e/4652R
Isotype:	IgG
Conjugate:	Unconjugated
Purification:	Protein A/G chromatography.
Concentration:	200 µg/ml
Product Form:	Liquid
Formulation:	Supplied in 10mM Phosphate Buffered Saline with 0.05% BSA and 0.05% Sodium Azide.
Storage:	Shipped at 4°C. Upon delivery aliquot and store at -20°C. Avoid freeze / thaw cycles.
General Notes:	This monoclonal antibody is also available in a different formulation without BSA and Sodium Azide - Anti-CD3 epsilon Antibody [C3e/4652R] - BSA and Azide free (A278675).

Anti-CD3 epsilon Antibody [C3e/4652R] (A278087)

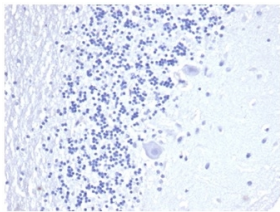
Specifications continued:

Disclaimer: This product is for research use only. It is not intended for diagnostic or therapeutic use.

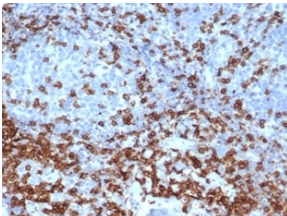
Images:



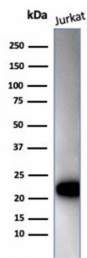
Immunohistochemical analysis of formalin-fixed, paraffin-embedded human lymph node tissue using Anti-CD3 epsilon Antibody [C3e/4652R].



Negative Tissue Control: Immunohistochemical analysis of formalin-fixed, paraffin-embedded human brain using Anti-CD3 epsilon Antibody [C3e/4652R] at 2 μ g/ml in PBS for 30 minutes at room temperature.



Immunohistochemical analysis of formalin-fixed, paraffin-embedded human tonsil using Anti-CD3 epsilon Antibody [C3e/4652R] at 2 μ g/ml in PBS for 30 minutes at room temperature.



Western blot analysis of Jurkat cell lysate using Anti-CD3 epsilon Antibody [C3e/4652R].