

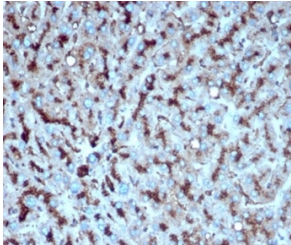
Anti-Cathepsin D Antibody [CTSD/4497] - BSA and Azide free (A278157)

Specifications:

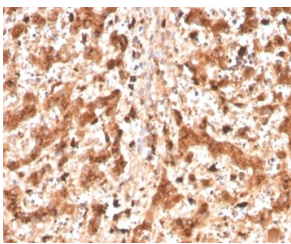
Name:	Anti-Cathepsin D Antibody [CTSD/4497] - BSA and Azide free
Description:	Mouse monoclonal [CTSD/4497] antibody to Cathepsin D.
Specificity:	Cathepsin D is a ubiquitously expressed lysosomal aspartyl protease involved in the normal degradation of proteins. It is synthesized as an inactive 43kDa preprocathepsin D that is cleaved and glycosylated to form a 46kDa procathepsin D and then further cleaved to produce 28kDa and 15kDa subunits (heavy and light chains, respectively). Cathepsin D exhibits pepsin-like activity and plays a role in protein turnover and in the proteolytic activation of hormones and growth factors. Mutations in this gene play a causal role in neuronal ceroid lipofuscinosis-10 and may be involved in the pathogenesis of several other diseases, including breast cancer and possibly Alzheimer's disease.
Applications:	WB, IHC-P
Recommended Dilutions:	WB: 1-2 µg/ml, IHC-P: 1-2 µg/ml
Reactivity:	Human
Immunogen:	Purified His-tagged Cathepsin D protein.
Host:	Mouse
Clonality:	Monoclonal
Clone ID:	CTSD/4497
Isotype:	IgG1
Light Chains:	kappa
Conjugate:	Unconjugated
Purification:	Protein A/G chromatography.
Concentration:	1 mg/ml
Product Form:	Liquid
Formulation:	Supplied in 10mM Phosphate Buffered Saline; without Sodium Azide and carrier free.
Storage:	Shipped at 4°C. Upon delivery aliquot and store at -20°C. Avoid freeze / thaw cycles.
General Notes:	This monoclonal antibody is also available in a different formulation with BSA and Sodium Azide - Anti-Cathepsin D Antibody [CTSD/4497] (A277569).
Disclaimer:	This product is for research use only. It is not intended for diagnostic or therapeutic use.

Anti-Cathepsin D Antibody [CTSD/4497] - BSA and Azide free (A278157)

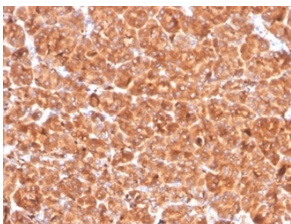
Images:



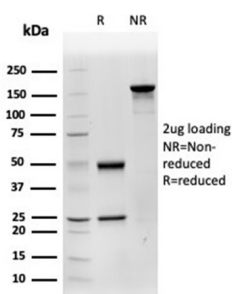
Immunohistochemical analysis of formalin-fixed, paraffin-embedded human liver carcinoma in colon tissue using Anti-Cathepsin D Antibody [CTSD/4497].



Immunohistochemical analysis of formalin-fixed, paraffin-embedded human liver tissue using Anti-Cathepsin D Antibody [CTSD/4497].



Immunohistochemical analysis of formalin-fixed, paraffin-embedded human pancreas tissue using Anti-Cathepsin D Antibody [CTSD/4497].



SDS-PAGE analysis of Anti-Cathepsin D Antibody [CTSD/4497] under non-reduced and reduced conditions; showing intact IgG and intact heavy and light chains, respectively. SDS-PAGE analysis confirms the integrity and purity of the antibody.