

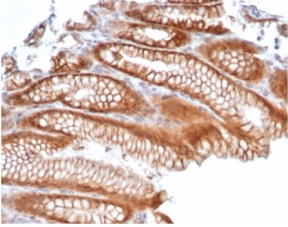
Anti-Reelin Antibody [RELN/4498] - BSA and Azide free (A278170)

Specifications:

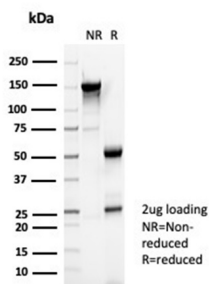
Name:	Anti-Reelin Antibody [RELN/4498] - BSA and Azide free
Description:	Mouse monoclonal [RELN/4498] antibody to Reelin.
Specificity:	Reelin (or Reln) is a large glycoprotein that is secreted by Cajal-Retzius cells in the forebrain and by granule neurons in the cerebellum. Reelin was shown to be mutated in reeler mice, a mutation that is associated with widespread disruption of laminated regions of the brain, leading to impaired motor coordination, tremors and ataxia. Reelin protein expression is complex and changes throughout development. Reelin appears to function upstream of Dab1, in a signaling pathway that controls cell positioning in the developing brain, and is also thought to be a direct effector of the neurotrophin BDNF.
Applications:	ELISA, IP, IF, WB, IHC-P
Recommended Dilutions:	IP: 1-2 μ g / 100-500 μ g proteins, IF: 1-2 μ g/ml, WB: 1-2 μ g/ml, IHC-P: 1-2 μ g/ml
Reactivity:	Human, Mouse, Rat
Immunogen:	Recombinant fragment, around amino acids 1,796-2,115, of human Reelin protein. The exact sequence is proprietary.
Host:	Mouse
Clonality:	Monoclonal
Clone ID:	RELN/4498
Isotype:	IgG2b
Conjugate:	Unconjugated
Purification:	Protein A/G chromatography.
Concentration:	1 mg/ml
Product Form:	Liquid
Formulation:	Supplied in 10mM Phosphate Buffered Saline; without Sodium Azide and carrier free.
Storage:	Shipped at 4°C. Upon delivery aliquot and store at -20°C. Avoid freeze / thaw cycles.
General Notes:	This monoclonal antibody is also available in a different formulation with BSA and Sodium Azide - Anti-Reelin Antibody [RELN/4498] (A277582).
Disclaimer:	This product is for research use only. It is not intended for diagnostic or therapeutic use.

Anti-Reelin Antibody [RELN/4498] - BSA and Azide free (A278170)

Images:



Immunohistochemical analysis of formalin-fixed, paraffin-embedded human kidney tissue using Anti-Reelin Antibody [RELN/4498]. Inset: PBS instead of the primary antibody. Secondary antibody negative control.



SDS-PAGE analysis of Anti-Reelin Antibody [RELN/4498] under non-reduced and reduced conditions; showing intact IgG and intact heavy and light chains, respectively. SDS-PAGE analysis confirms the integrity and purity of the antibody.