

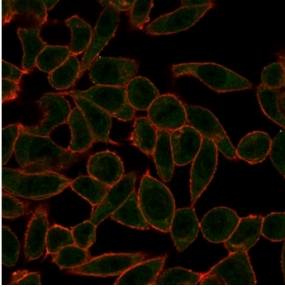
Anti-ETS2 Antibody [PCRP-ETS2-1D9] - BSA and Azide free (A278173)

Specifications:

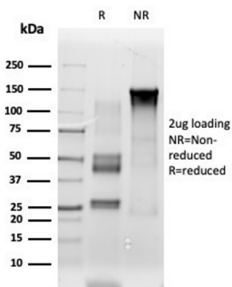
Name:	Anti-ETS2 Antibody [PCRP-ETS2-1D9] - BSA and Azide free
Description:	Mouse monoclonal [PCRP-ETS2-1D9] antibody to ETS2.
Specificity:	ETS2 (or Reln) is a large glycoprotein that is secreted by Cajal-Retzius cells in the forebrain and by granule neurons in the cerebellum. ETS2 was shown to be mutated in reeler mice, a mutation that is associated with widespread disruption of laminated regions of the brain, leading to impaired motor coordination, tremors and ataxia. ETS2 protein expression is complex and changes throughout development. ETS2 appears to function upstream of Dab1, in a signaling pathway that controls cell positioning in the developing brain, and is also thought to be a direct effector of the neurotrophin BDNF.
Applications:	ELISA, Flow Cytometry, IF, IP
Recommended Dilutions:	Flow Cytometry: 1-2 µg/million cells, IF: 1-2 µg/ml, IP: 1-2µg / 100-500µg proteins
Reactivity:	Human
Immunogen:	Recombinant full-length human ETS2 protein.
Host:	Mouse
Clonality:	Monoclonal
Clone ID:	PCRP-ETS2-1D9
Isotype:	IgG2b
Conjugate:	Unconjugated
Purification:	Protein A/G chromatography.
Concentration:	1 mg/ml
Product Form:	Liquid
Formulation:	Supplied in 10mM Phosphate Buffered Saline; without Sodium Azide and carrier free.
Storage:	Shipped at 4°C. Upon delivery aliquot and store at -20°C. Avoid freeze / thaw cycles.
General Notes:	This monoclonal antibody is also available in a different formulation with BSA and Sodium Azide - Anti-ETS2 Antibody [PCRP-ETS2-1D9] (A277585).
Disclaimer:	This product is for research use only. It is not intended for diagnostic or therapeutic use.

Anti-ETS2 Antibody [PCRP-ETS2-1D9] - BSA and Azide free (A278173)

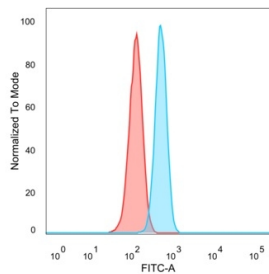
Images:



Immunofluorescent analysis of PFA-fixed HeLa cells stained with Anti-ETS2 Antibody [PCRP-ETS2-1D9] followed by Goat Anti-Mouse IgG (CF® 488) (Green). CF® 640A Phalloidin (Red).



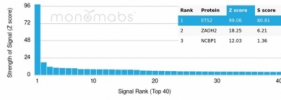
SDS-PAGE analysis of Anti-ETS2 Antibody [PCRP-ETS2-1D9] under non-reduced and reduced conditions; showing intact IgG and intact heavy and light chains, respectively. SDS-PAGE analysis confirms the integrity and purity of the antibody.



Flow cytometric analysis of PFA-fixed HeLa cells using Anti-ETS2 Antibody [PCRP-ETS2-1D9] followed by Goat Anti-Mouse IgG (CF® 488) (Blue). Isotype Control (Red).

Anti-ETS2 Antibody [PCR-ETS2-1D9] - BSA and Azide free (A278173)

Images continued:



Analysis of protein array containing more than 19,000 full-length human proteins using Anti-ETS2 Antibody [PCR-ETS2-1D9]. Z-Score and S-Score: The Z-score represents the strength of a signal that a monoclonal antibody (MAb) (in combination with a fluorescently-tagged anti-IgG secondary antibody) produces when binding to a particular protein on the HuProt™ array. Z-scores are described in units of standard deviations (SD's) above the mean value of all signals generated on that array. If targets on HuProt™ are arranged in descending order of the Z-score, the S-score is the difference (also in units of SD's) between the Z-score. S-score therefore represents the relative target specificity of a MAb to its intended target; a MAb is considered to be specific to its intended target, if the MAb has an S-score of at least 2.5. For example, if a MAb binds to protein X with a Z-score of 43 and to protein Y with a Z-score of 14, then the S-score for the binding of that MAb to protein X is equal to 29.