

Anti-beta Actin Antibody [ACTB/1108] - BSA and Azide free (A278361)

Specifications:

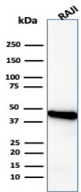
Name:	Anti-beta Actin Antibody [ACTB/1108] - BSA and Azide free
Description:	Mouse monoclonal [ACTB/1108] antibody to beta Actin.
Specificity:	All eukaryotic cells express Actin, which often constitutes as much as 50% of total cellular protein. Actin filaments can form both stable and labile structures and are crucial components of microvilli and the contractile apparatus of muscle cells. While lower eukaryotes, such as yeast, have only one Actin gene, higher eukaryotes have several isoforms encoded by a family of genes. At least six types of Actin are present in mammalian tissues and fall into three classes. α -Actin expression is limited to various types of muscle, whereas β -Actin and γ -Actin are the principle constituents of filaments in other tissues. Members of the small GTPase family regulate the organization of the Actin cytoskeleton. Rho controls the assembly of Actin stress fibers and focal adhesion. Rac regulates Actin filament accumulation at the plasma membrane. Cdc42 stimulates formation of filopodia.
Applications:	WB, IHC-P
Recommended Dilutions:	WB: 1-2 μ g/ml, IHC-P: 1-2 μ g/ml
Reactivity:	Human, Mouse, Rat, Hamster, Monkey, Canine
Immunogen:	Recombinant full-length human beta Actin.
Host:	Mouse
Clonality:	Monoclonal
Clone ID:	ACTB/1108
Isotype:	IgG2b
Light Chains:	kappa
Conjugate:	Unconjugated
Purification:	Protein A/G chromatography.
Concentration:	1 mg/ml
Product Form:	Liquid
Formulation:	Supplied in 10mM Phosphate Buffered Saline; without Sodium Azide and carrier free.
Storage:	Shipped at 4°C. Upon delivery aliquot and store at -20°C. Avoid freeze / thaw cycles.
General Notes:	This monoclonal antibody is also available in a different formulation with BSA and Sodium Azide - Anti-beta Actin Antibody [ACTB/1108] (A277773).

Anti-beta Actin Antibody [ACTB/1108] - BSA and Azide free (A278361)

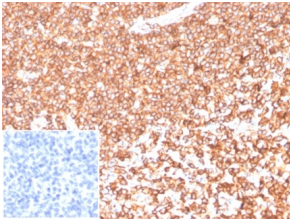
Specifications continued:

Disclaimer: This product is for research use only. It is not intended for diagnostic or therapeutic use.

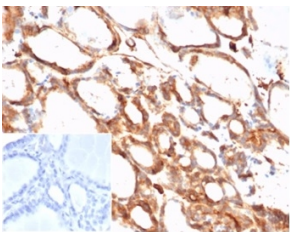
Images:



Western blot analysis of Raji cell line lysate using Anti-beta Actin Antibody [ACTB/1108].



Immunohistochemical analysis of formalin-fixed, paraffin-embedded human tonsil tissue using Anti-beta Actin Antibody [ACTB/1108]. Inset: PBS instead of the primary antibody. Secondary antibody negative control.



Immunohistochemical analysis of formalin-fixed, paraffin-embedded human thyroid tissue using Anti-beta Actin Antibody [ACTB/1108]. Inset: PBS instead of the primary antibody. Secondary antibody negative control.