

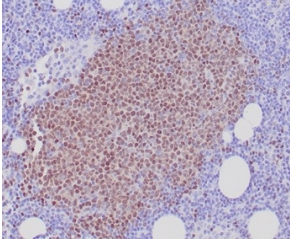
Anti-SOX11 Antibody [SOX11/7236] - BSA and Azide free (A278389)

Specifications:

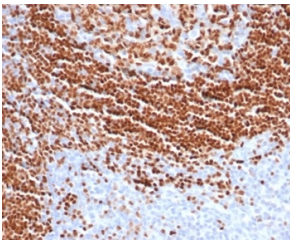
Name:	Anti-SOX11 Antibody [SOX11/7236] - BSA and Azide free
Description:	Mouse monoclonal [SOX11/7236] antibody to SOX11.
Specificity:	This antibody recognizes a protein of ~47kDa, identified as SOX11. This MAb is highly specific and does not cross-react with other members of the SOX-family. Mantle cell lymphoma (MCL) accounts for 5% to 10% of mature B-cell neoplasms and is an aggressive disease genetically characterized by overexpression of Cyclin D1. Cyclin D1 overexpression is the hallmark of MCL. However, approximately 5%-10% of MCLs lack Cyclin D1 expression and may be misdiagnosed. Almost all Cyclin D1-positive as well as Cyclin D1-negative MCL, show overexpression of SOX-11. The detection of this transcription factor is a useful biomarker for identifying true cyclin D1-negative MCL.
Applications:	IHC-P
Recommended Dilutions:	IHC-P: 1-2 µg/ml
Reactivity:	Human
Immunogen:	Recombinant fragment, around amino acids 50-200, of human SOX11 protein. The exact sequence is proprietary.
Host:	Mouse
Clonality:	Monoclonal
Clone ID:	SOX11/7236
Isotype:	IgG1
Light Chains:	kappa
Conjugate:	Unconjugated
Purification:	Protein A/G chromatography.
Concentration:	1 mg/ml
Product Form:	Liquid
Formulation:	Supplied in 10mM Phosphate Buffered Saline; without Sodium Azide and carrier free.
Storage:	Shipped at 4°C. Upon delivery aliquot and store at -20°C. Avoid freeze / thaw cycles.
General Notes:	This monoclonal antibody is also available in a different formulation with BSA and Sodium Azide - Anti-SOX11 Antibody [SOX11/7236] (A277801).
Disclaimer:	This product is for research use only. It is not intended for diagnostic or therapeutic use.

Anti-SOX11 Antibody [SOX11/7236] - BSA and Azide free (A278389)

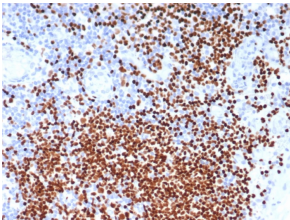
Images:



Immunohistochemical analysis of formalin-fixed, paraffin-embedded human mantle cell lymphoma tissue using Anti-SOX11 Antibody [SOX11/7236].



Immunohistochemical analysis of formalin-fixed, paraffin-embedded human tonsil tissue using Anti-SOX11 Antibody [SOX11/7236].



Immunohistochemical analysis of formalin-fixed, paraffin-embedded human lymph node tissue using Anti-SOX11 Antibody [SOX11/7236].