

Anti-CD36 Antibody [CD36/7217] - BSA and Azide free (A278442)

Specifications:

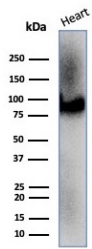
Name:	Anti-CD36 Antibody [CD36/7217] - BSA and Azide free
Description:	Mouse monoclonal [CD36/7217] antibody to CD36.
Specificity:	This antibody recognizes a protein of 80kDa-90kDa, identified as CD36. It is expressed on platelets, monocytes and macrophages, microvascular endothelial cells, erythrocyte precursors, mammary epithelial cells, and some macrophage derived dendritic cells. CD36 acts as a receptor for thrombospondin (TSP), collagen types I, IV and V, <i>P. falciparum</i> malaria-infected erythrocytes, and sickle erythrocytes. It also functions as a scavenger receptor, mediating macrophage uptake of oxidized low-density lipoprotein (LDL) and recognition of apoptotic polymorphonuclear leukocytes (PMN). CD36 plays a role in platelet aggregation, macrophage foam cell development, inflammation, and the tissue ischemia observed in sickle cell disease and cerebral malaria. Note that 1-4% of Japanese and East Asia population lack CD36.
Applications:	Functional Studies, WB, IHC-P
Recommended Dilutions:	WB: 1-2 µg/ml, IHC-P: 1-2 µg/ml
Reactivity:	Human
Immunogen:	Recombinant full-length human CD36 protein.
Host:	Mouse
Clonality:	Monoclonal
Clone ID:	CD36/7217
Isotype:	IgG2c
Light Chains:	kappa
Conjugate:	Unconjugated
Purification:	Protein A/G chromatography.
Concentration:	1 mg/ml
Product Form:	Liquid
Formulation:	Supplied in 10mM Phosphate Buffered Saline; without Sodium Azide and carrier free.
Storage:	Shipped at 4°C. Upon delivery aliquot and store at -20°C. Avoid freeze / thaw cycles.
General Notes:	This monoclonal antibody is also available in a different formulation with BSA and Sodium Azide - Anti-CD36 Antibody [CD36/7217] (A277854).

Anti-CD36 Antibody [CD36/7217] - BSA and Azide free (A278442)

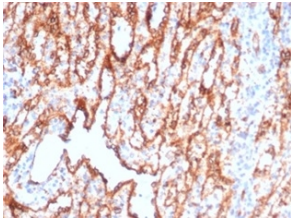
Specifications continued:

Disclaimer: This product is for research use only. It is not intended for diagnostic or therapeutic use.

Images:



Western blot analysis of human heart tissue lysate using Anti-CD36 Antibody [CD36/7217].



Immunohistochemical analysis of formalin-fixed, paraffin-embedded human spleen tissue using Anti-CD36 Antibody [CD36/7217] at 2 µg/ml.