

Anti-Luteinizing Hormone beta Antibody [rLHb/1613] - BSA and Azide free (A278486)

Specifications:

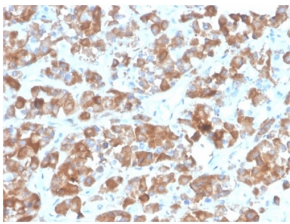
Name:	Anti-Luteinizing Hormone beta Antibody [rLHb/1613] - BSA and Azide free
Description:	Recombinant mouse monoclonal [rLHb/1613] antibody to Luteinizing Hormone beta.
Specificity:	LH has a beta subunit of 121 amino acids (LHB) that confers its specific biologic action and is responsible for interaction with the LH receptor. This beta subunit contains the same amino acids in sequence as the beta subunit of hCG and both stimulate the same receptor; however, the hCG beta subunit contains an additional 24 amino acids and the hormones differ in the composition of their sugar moieties. LH is synthesized and secreted by gonadotrophs in the anterior lobe of the pituitary gland. In concert with the other pituitary gonadotropin follicle-stimulating hormone (FSH), it is necessary for proper reproductive function. In the female, an acute rise of LH levels triggers ovulation. In the male, where LH has also been called Interstitial Cell-Stimulating Hormone (ICSH), it stimulates Leydig cell production of testosterone. LH is a useful marker in classification of pituitary tumors and the study of pituitary disease.
Applications:	IHC-P
Recommended Dilutions:	IHC-P: 1-2 µg/ml
Reactivity:	Human
Immunogen:	Recombinant full-length human Luteinizing Hormone beta.
Host:	Mouse
Clonality:	Monoclonal
Clone ID:	rLHb/1613
Isotype:	IgG1
Light Chains:	kappa
Conjugate:	Unconjugated
Purification:	Protein A/G chromatography.
Concentration:	1 mg/ml
Product Form:	Liquid
Formulation:	Supplied in 10mM Phosphate Buffered Saline; without Sodium Azide and carrier free.
Storage:	Shipped at 4°C. Upon delivery aliquot and store at -20°C. Avoid freeze / thaw cycles.

Anti-Luteinizing Hormone beta Antibody [rLHb/1613] - BSA and Azide free (A278486)

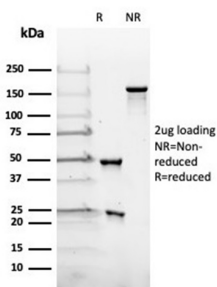
Specifications continued:

General Notes:	This monoclonal antibody is also available in a different formulation with BSA and Sodium Azide - Anti-Luteinizing Hormone beta Antibody [rLHb/1613] (A277898).
Disclaimer:	This product is for research use only. It is not intended for diagnostic or therapeutic use.

Images:



Immunohistochemical analysis of formalin-fixed, paraffin-embedded human pituitary tissue using Anti-Luteinizing Hormone beta Antibody [rLHb/1613].



SDS-PAGE analysis of Anti-Luteinizing Hormone beta Antibody [rLHb/1613] under non-reduced and reduced conditions; showing intact IgG and intact heavy and light chains, respectively. SDS-PAGE analysis confirms the integrity and purity of the antibody.