

Anti-His Tag Antibody [r6HIS/6423] - BSA and Azide free (A278529)

Specifications:

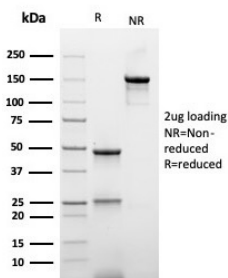
Name:	Anti-His Tag Antibody [r6HIS/6423] - BSA and Azide free
Description:	Recombinant mouse monoclonal [r6HIS/6423] antibody to His Tag.
Specificity:	It recognizes both the free and protein-conjugated (either soluble or cell bound) form of hexa-histidine. This MAb is highly specific to hexa-histidine and shows no cross-reaction with other structurally related compounds. It has a very high affinity for hexa-histidine and is excellent for use in various techniques. His-Tag Antibody detects recombinant proteins containing the 6xHis epitope tag. The antibody recognizes the 6xHis-tag fused to either the amino or carboxy terminus of targeted proteins in transfected cells. Epitope tags are useful for the labeling and detection of proteins using immunoblotting, immunoprecipitation, and immunostaining techniques. Because of their small size, they are unlikely to affect the tagged protein's biochemical properties. A variety of plasmids contain DNA that encodes an amino-terminal tag consisting of six histidine (6xHis) residues followed by an extended multiple cloning site. The 6xHis tag on the expressed recombinant proteins allows for efficient coupling to Ni ²⁺ affinity resins and purification by single step chromatography. As is the case with other protein tag systems, this polyhistidine tag can often be cleaved at sites recognized by proteases such as thrombin and enterokinases to isolate the protein of interest.
Applications:	WB, Flow Cytometry, IF, IP
Recommended Dilutions:	WB: 1-2 µg/ml, Flow Cytometry: 0.5-1 µg/million cells, IF: 0.5-1 µg/ml, IP: 2-4µg / 500µg proteins
Immunogen:	Hexa-histidine tagged recombinant human CD70 protein.
Host:	Mouse
Clonality:	Monoclonal
Clone ID:	r6HIS/6423
Isotype:	IgG1
Light Chains:	kappa
Conjugate:	Unconjugated
Purification:	Protein A/G chromatography.
Concentration:	1 mg/ml
Product Form:	Liquid
Formulation:	Supplied in 10mM Phosphate Buffered Saline; without Sodium Azide and carrier free.

Anti-His Tag Antibody [r6HIS/6423] - BSA and Azide free (A278529)

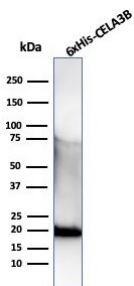
Specifications continued:

Storage:	Shipped at 4°C. Upon delivery aliquot and store at -20°C. Avoid freeze / thaw cycles.
General Notes:	This monoclonal antibody is also available in a different formulation with BSA and Sodium Azide - Anti-His Tag Antibody [r6HIS/6423] (A277941).
Disclaimer:	This product is for research use only. It is not intended for diagnostic or therapeutic use.

Images:



SDS-PAGE analysis of Anti-His Tag Antibody [r6HIS/6423] under non-reduced and reduced conditions; showing intact IgG and intact heavy and light chains, respectively. SDS-PAGE analysis confirms the integrity and purity of the antibody.



Western blot analysis of recombinant CELA3B protein (His Tag) using Anti-His Tag Antibody [r6HIS/6423].