

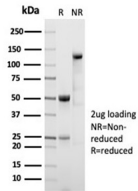
## Anti-ALDH1A1 Antibody [ALDH1A1/7011R] - BSA and Azide free (A278568)

### Specifications:

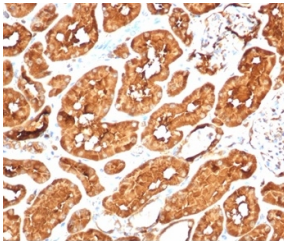
Name:	Anti-ALDH1A1 Antibody [ALDH1A1/7011R] - BSA and Azide free
Description:	Recombinant rabbit monoclonal [ALDH1A1/7011R] antibody to ALDH1A1.
Specificity:	ALDH1A1 belongs to the ALDH enzymes, a family of evolutionarily conserved enzymes comprised of 19 isoforms that are localized in the cytoplasm, mitochondria or nucleus. ALDH1A1 is predominantly expressed in the epithelium of testis, brain, eye, liver, kidney, as well as neural and hematopoietic stem cells. Reportedly, high ALDH1A1 expression is found in solitary fibrous tumor (SFT) and hemangiopericytoma (HPC), compared to meningiomas and synovial sarcomas. In combination with CD34, ALDH1A1 may be useful for the differentiation among SFT, HPC, meningioma, and synovial sarcoma.
Applications:	IHC-P
Recommended Dilutions:	IHC-P: 1-2 µg/ml
Reactivity:	Human
Immunogen:	Recombinant fragment, around amino acids 315-434, of human ALDH1A1 protein. The exact sequence is proprietary..
Host:	Rabbit
Clonality:	Monoclonal
Clone ID:	ALDH1A1/7011R
Isotype:	IgG
Conjugate:	Unconjugated
Purification:	Protein A/G chromatography.
Concentration:	1 mg/ml
Product Form:	Liquid
Formulation:	Supplied in 10mM Phosphate Buffered Saline; without Sodium Azide and carrier free.
Storage:	Shipped at 4°C. Upon delivery aliquot and store at -20°C. Avoid freeze / thaw cycles.
General Notes:	This monoclonal antibody is also available in a different formulation with BSA and Sodium Azide - Anti-ALDH1A1 Antibody [ALDH1A1/7011R] (A277980).
Disclaimer:	This product is for research use only. It is not intended for diagnostic or therapeutic use.

## Anti-ALDH1A1 Antibody [ALDH1A1/7011R] - BSA and Azide free (A278568)

Images:



SDS-PAGE analysis of Anti-ALDH1A1 Antibody [ALDH1A1/7011R] under non-reduced and reduced conditions; showing intact IgG and intact heavy and light chains, respectively. SDS-PAGE analysis confirms the integrity and purity of the antibody.



Immunohistochemical analysis of formalin-fixed, paraffin-embedded human kidney tissue using Anti-ALDH1A1 Antibody [ALDH1A1/7011R].