

Anti-Prostate Specific Antigen Antibody [KLK3/4602R] - BSA and Azide free (A278590)

Specifications:

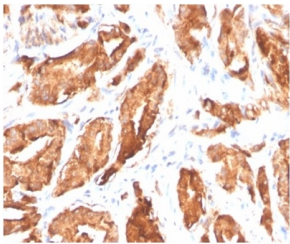
Name:	Anti-Prostate Specific Antigen Antibody [KLK3/4602R] - BSA and Azide free
Description:	Recombinant rabbit monoclonal [KLK3/4602R] antibody to Prostate Specific Antigen.
Specificity:	Prostate-specific antigen (PSA) is a single-chain glycoprotein of 237 amino acids containing approximately 8% carbohydrate. It is a serine protease produced almost exclusively by prostatic epithelial cells. Immunohistochemically PSA is expressed in the highly specialized apically-superficial layer of female and male secretory cells of the prostate gland, and is readily demonstrated in adenocarcinomas of the prostate in about 99% of the cases. There is a correlation between malignancy grade and intensity of staining, high grade carcinomas displaying weaker expression. About 1% of poorly differentiated carcinomas have been negative for PSA. Due to the high specificity of PSA for prostatic glandular epithelium, it is very useful in identifying prostatic carcinoma in the prostate and in the adjacent organs often affected by epithelial malignancies, i.e. rectum and urinary bladder. PSA may be used in a panel together with NKX3.1 and Prostein, which are at least as sensitive and slightly more specific than PSA.
Applications:	IHC-P
Recommended Dilutions:	IHC-P: 1-2 µg/ml
Reactivity:	Human
Immunogen:	Synthetic peptide corresponding to residues within amino acids 150-250 of human PSA.
Host:	Rabbit
Clonality:	Monoclonal
Clone ID:	KLK3/4602R
Isotype:	IgG
Conjugate:	Unconjugated
Purification:	Protein A/G chromatography.
Concentration:	1 mg/ml
Product Form:	Liquid
Formulation:	Supplied in 10mM Phosphate Buffered Saline; without Sodium Azide and carrier free.
Storage:	Shipped at 4°C. Upon delivery aliquot and store at -20°C. Avoid freeze / thaw cycles.

Anti-Prostate Specific Antigen Antibody [KLK3/4602R] - BSA and Azide free (A278590)

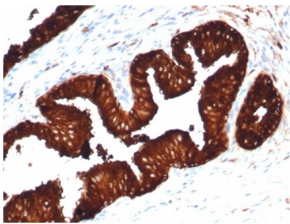
Specifications continued:

General Notes:	This monoclonal antibody is also available in a different formulation with BSA and Sodium Azide - Anti-Prostate Specific Antigen Antibody [KLK3/4602R] (A278002).
Disclaimer:	This product is for research use only. It is not intended for diagnostic or therapeutic use.

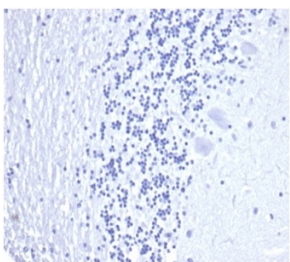
Images:



Immunohistochemical analysis of formalin-fixed, paraffin-embedded human prostate carcinoma tissue using Anti-Prostate Specific Antigen Antibody [KLK3/4602R].



Immunohistochemical analysis of formalin-fixed, paraffin-embedded human prostate carcinoma tissue using Anti-Prostate Specific Antigen Antibody [KLK3/4602R].



Negative Tissue Control: Immunohistochemical analysis of formalin-fixed, paraffin-embedded human brain using Anti-Prostate Specific Antigen Antibody [KLK3/4602R] at 2 μ g/ml in PBS for 30 minutes at room temperature.