

Anti-67kDa Laminin Receptor Antibody [RPSA/6332R] - BSA and Azide free (A278608)

Specifications:

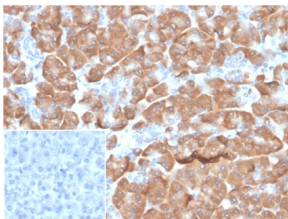
| | |
|------------------------|--|
| Name: | Anti-67kDa Laminin Receptor Antibody [RPSA/6332R] - BSA and Azide free |
| Description: | Recombinant rabbit monoclonal [RPSA/6332R] antibody to 67kDa Laminin Receptor. |
| Specificity: | Laminins, a family of extracellular matrix glycoproteins, are the major non-collagenous constituent of basement membranes. They have been implicated in a wide variety of biological processes including cell adhesion, differentiation, migration, signaling, neurite outgrowth and metastasis. Many of the effects of laminin are mediated through interactions with cell surface receptors. These receptors include members of the integrin family, as well as non-integrin laminin-binding proteins. This gene encodes a high-affinity, non-integrin family, laminin receptor 1. Reportedly, level of laminin receptor transcript is higher in colon carcinoma tissue and lung cancer cell line than their normal counterparts. Also, there is a correlation between the upregulation of this polypeptide in cancer cells and their invasive and metastatic phenotype. |
| Applications: | IHC-P |
| Recommended Dilutions: | IHC-P: 1-2 µg/ml |
| Reactivity: | Human |
| Immunogen: | Recombinant full-length human RPSA protein. |
| Host: | Rabbit |
| Clonality: | Monoclonal |
| Clone ID: | RPSA/6332R |
| Isotype: | IgG |
| Light Chains: | kappa |
| Conjugate: | Unconjugated |
| Purification: | Protein A/G chromatography. |
| Concentration: | 1 mg/ml |
| Product Form: | Liquid |
| Formulation: | Supplied in 10mM Phosphate Buffered Saline; without Sodium Azide and carrier free. |
| Storage: | Shipped at 4°C. Upon delivery aliquot and store at -20°C. Avoid freeze / thaw cycles. |

Anti-67kDa Laminin Receptor Antibody [RPSA/6332R] - BSA and Azide free (A278608)

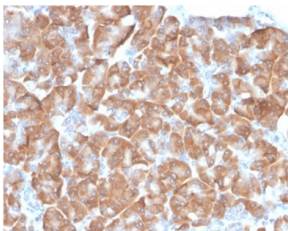
Specifications continued:

| | |
|----------------|--|
| General Notes: | This monoclonal antibody is also available in a different formulation with BSA and Sodium Azide - Anti-67kDa Laminin Receptor Antibody [RPSA/6332R] (A278020). |
| Disclaimer: | This product is for research use only. It is not intended for diagnostic or therapeutic use. |

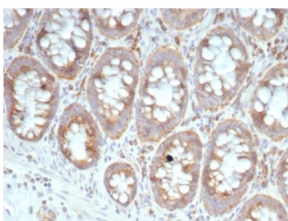
Images:



Immunohistochemical analysis of formalin-fixed, paraffin-embedded human pancreas tissue using Anti-67kDa Laminin Receptor Antibody [RPSA/6332R]. Inset: PBS instead of the primary antibody. Secondary antibody negative control.



Immunohistochemical analysis of formalin-fixed, paraffin-embedded human pancreas tissue using Anti-67kDa Laminin Receptor Antibody [RPSA/6332R].



Immunohistochemical analysis of formalin-fixed, paraffin-embedded human colon tissue using Anti-67kDa Laminin Receptor Antibody [RPSA/6332R].