

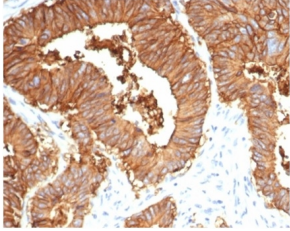
Anti-EpCAM Antibody [EGP40/7035R] - BSA and Azide free (A278614)

Specifications:

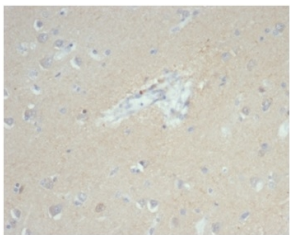
Name:	Anti-EpCAM Antibody [EGP40/7035R] - BSA and Azide free
Description:	Recombinant rabbit monoclonal [EGP40/7035R] antibody to EpCAM.
Specificity:	Epitope of this MAb is mapped between aa 202-212 of EGP40, which is a 40-43kDa transmembrane epithelial glycoprotein, also identified as epithelial specific antigen (ESA), or epithelial cellular adhesion molecule (Ep-CAM). It is expressed on baso-lateral cell surface in most simple epithelia and a vast majority of carcinomas. Antibody to Ep-CAM has been used to distinguish adenocarcinoma from pleural mesothelioma and hepatocellular carcinoma. This antibody is also useful in distinguishing serous carcinomas of the ovary from mesothelioma.
Applications:	IHC-P
Recommended Dilutions:	IHC-P: 1-2 µg/ml
Reactivity:	Human, Canine, Feline
Immunogen:	Recombinant fragment from the cytoplasmic domain, around amino acids 289-314, of human EpCAM protein. The exact sequence is proprietary.
Host:	Rabbit
Clonality:	Monoclonal
Clone ID:	EGP40/7035R
Isotype:	IgG
Conjugate:	Unconjugated
Purification:	Protein A chromatography.
Concentration:	1 mg/ml
Product Form:	Liquid
Formulation:	Supplied in 10mM Phosphate Buffered Saline; without Sodium Azide and carrier free.
Storage:	Shipped at 4°C. Upon delivery aliquot and store at -20°C. Avoid freeze / thaw cycles.
General Notes:	This monoclonal antibody is also available in a different formulation with BSA and Sodium Azide - Anti-EpCAM Antibody [EGP40/7035R] (A278026).
Disclaimer:	This product is for research use only. It is not intended for diagnostic or therapeutic use.

Anti-EpCAM Antibody [EGP40/7035R] - BSA and Azide free (A278614)

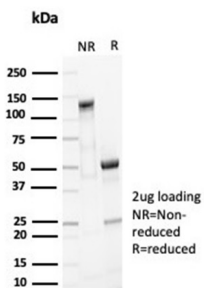
Images:



Immunohistochemical analysis of formalin-fixed, paraffin-embedded human colon tissue using Anti-EpCAM Antibody [EGP40/7035R].



Immunohistochemical analysis of formalin-fixed, paraffin-embedded human brain tissue using Anti-EpCAM Antibody [EGP40/7035R].



SDS-PAGE analysis of Anti-EpCAM Antibody [EGP40/7035R] under non-reduced and reduced conditions; showing intact IgG and intact heavy and light chains, respectively. SDS-PAGE analysis confirms the integrity and purity of the antibody.