

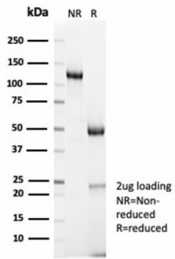
Anti-Cyclin B1 Antibody [CCNB1/7030R] - BSA and Azide free (A278674)

Specifications:

Name:	Anti-Cyclin B1 Antibody [CCNB1/7030R] - BSA and Azide free
Description:	Recombinant rabbit monoclonal [CCNB1/7030R] antibody to Cyclin B1.
Specificity:	It recognizes a protein of 55-62kDa, identified as cyclin B1. In mammals, cyclin B associates with inactive p34cdc2, which facilitates phosphorylation of p34cdc2 at aa 14Thr and 15Tyr. This maintains the inactive state until the end of G2-phase. The inactive cyclin B-p34cdc2 complex continues to accumulate in the cytoplasm until the completion of DNA synthesis, when Cdc25, a specific protein phosphatase, dephosphorylates aa 14Thr and 15Tyr of p34cdc2 rendering the complex active at the G2/M boundary. This mitotic kinase complex remains active until the metaphase/anaphase transition when cyclin B is degraded. This degradation process is ubiquitin-dependent and is necessary for the cell to exit mitosis. So, cyclin B-p34cdc2 plays a critical role in G2 to M transition.
Reactivity:	Human, Mouse, Hamster
Immunogen:	Recombinant full-length human Cyclin B1 protein.
Host:	Rabbit
Clonality:	Monoclonal
Clone ID:	CCNB1/7030R
Isotype:	IgG
Light Chains:	kappa
Conjugate:	Unconjugated
Purification:	Protein A/G chromatography.
Concentration:	1 mg/ml
Product Form:	Liquid
Formulation:	Supplied in 10mM Phosphate Buffered Saline; without Sodium Azide and carrier free.
Storage:	Shipped at 4°C. Upon delivery aliquot and store at -20°C. Avoid freeze / thaw cycles.
General Notes:	This monoclonal antibody is also available in a different formulation with BSA and Sodium Azide - Anti-Cyclin B1 Antibody [CCNB1/7030R] (A278086).
Disclaimer:	This product is for research use only. It is not intended for diagnostic or therapeutic use.

Anti-Cyclin B1 Antibody [CCNB1/7030R] - BSA and Azide free (A278674)

Images:



SDS-PAGE analysis of Anti-Cyclin B1 Antibody [CCNB1/7030R] under non-reduced and reduced conditions; showing intact IgG and intact heavy and light chains, respectively. SDS-PAGE analysis confirms the integrity and purity of the antibody.