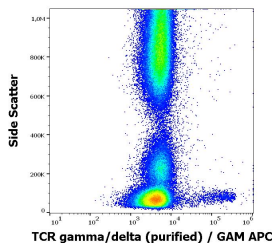


Anti-TCR gamma + TCR delta Antibody [11F2] (A285817)

Specifications:

Name:	Anti-TCR gamma + TCR delta Antibody [11F2]
Description:	Mouse monoclonal [11F2] antibody to TCR gamma + TCR delta.
Specificity:	This antibody recognizes an extracellular epitope in all molecular forms of the TCR gamma/delta.
Applications:	Flow Cytometry, ELISA, IP, IHC-Fr
Recommended Dilutions:	Flow Cytometry: 1-4 µg/ml
Reactivity:	Human
Immunogen:	Purified CD3 antigen complex.
Host:	Mouse
Clonality:	Monoclonal
Clone ID:	11F2
Isotype:	IgG1
Conjugate:	Unconjugated
Purification:	Protein A Chromatography.
Concentration:	1 mg/ml
Product Form:	Liquid
Formulation:	Supplied in Phosphate Buffered Saline, pH 7.4, with 15 mM Sodium Azide.
Storage:	Shipped at 4°C. Upon delivery aliquot and store at -20°C. Avoid freeze / thaw cycles.
Disclaimer:	This product is for research use only. It is not intended for diagnostic or therapeutic use.

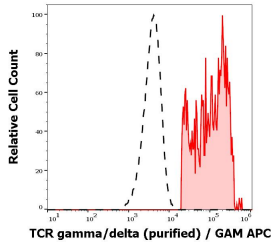
Images:



Flow cytometric analysis of human peripheral whole blood stained with Anti-TCR gamma + TCR delta Antibody [11F2] (concentration in sample is 1.7 µg/ml, GAM-APC).

Anti-TCR gamma + TCR delta Antibody [11F2] (A285817)

Images continued:



Separation of TCR gamma/delta positive lymphocytes (red-filled) from human TCR gamma/delta negative lymphocytes (black-dashed) in flow cytometry analysis (surface staining) of peripheral whole blood stained with Anti-TCR gamma + TCR delta Antibody [11F2] (concentration in sample is 1.7 $\mu\text{g/ml}$, GAM-APC).